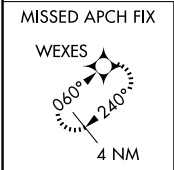
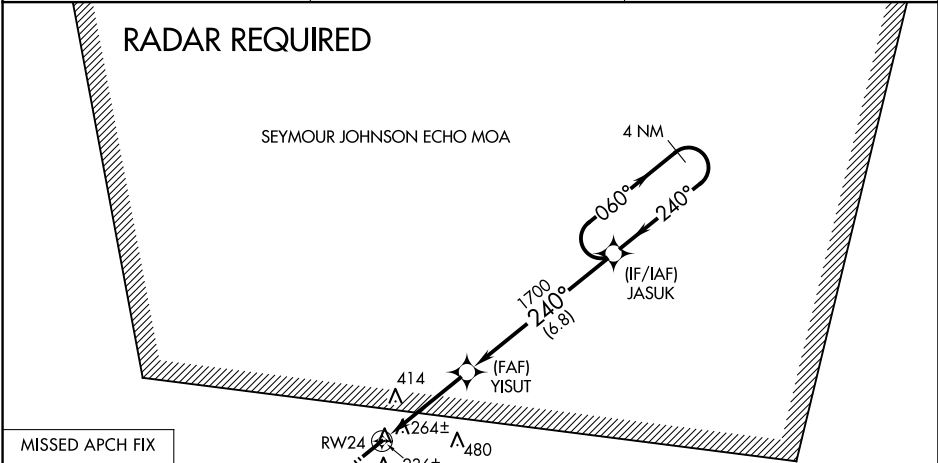


WAAS CH 82620 W24A	APP CRS 240°	Rwy Idg TDZE Apt Elev	5008 144 144
--	------------------------	-----------------------------	---

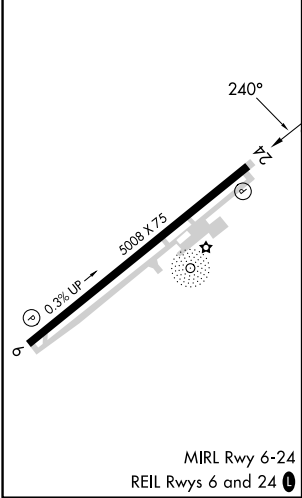
RNAV (GPS) Z RWY 24
CLINTON-SAMPSON COUNTY (CTZ)

RNP APCH-GPS. <div>Baro-VNAV NA when using DPL altimeter setting. For uncompensated Baro-VNAV systems, LNAV/VNAV NA below -15°C or above 46°C. When local altimeter setting not received, use DPL altimeter setting and increase all DA 45 feet, increase LNAV/VNAV Cats A/B/C visibility 1/8 mile. Rwy 24 helicopter visibility reduction below 3/4 SM NA.</div>	MISSED APPROACH: Climb to 2500 direct WEXES and hold.
--	--

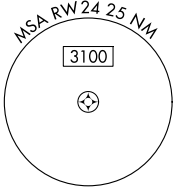
AWOS-3 119.125	FAYETTEVILLE APP CON 133.0 290.25	UNICOM 122.8 (CTAF) 1
--------------------------	---	---------------------------------



ELEV 144	TDZE 144
-----------------	-----------------



2500	WEXES	VGSI and RNAV glidepath not coincident (VGSI Angle 3.00/TCH 40).	JASUK	4 NM Holding Pattern
			YISUT	
			1700	
			240°	
			1700	
			3.9 NM	6.8 NM
CATEGORY	A	B	C	D
LPV DA	470-1	326 (400-1)		NA
LNAV/VNAV DA	566-1 1/4	422 (500-1 1/4)		NA



SE-2, 10 JUL 2025 to 07 AUG 2025

SE-2, 10 JUL 2025 to 07 AUG 2025