

CLINTON, NORTH CAROLINA

AL-5782 (FAA)

23110

WAAS CH <b>53720</b> <b>W06A</b>	APP CRS <b>060°</b>	Rwy Idg <b>5008</b> TDZE <b>142</b> Apt Elev <b>144</b>
--	------------------------	---

# RNAV (GPS) RWY 6

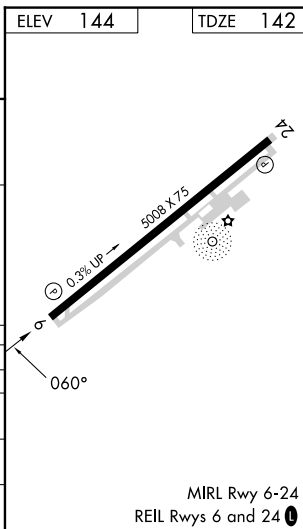
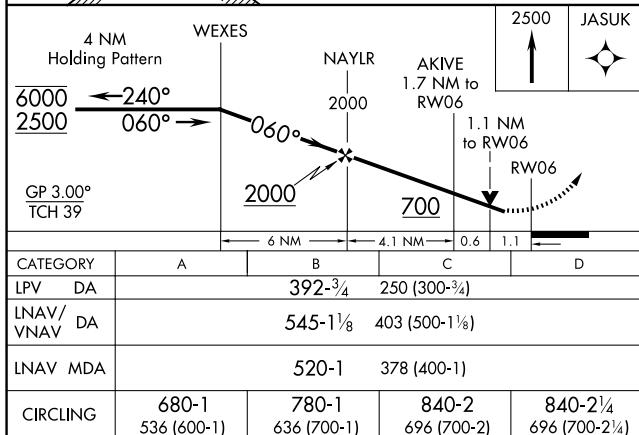
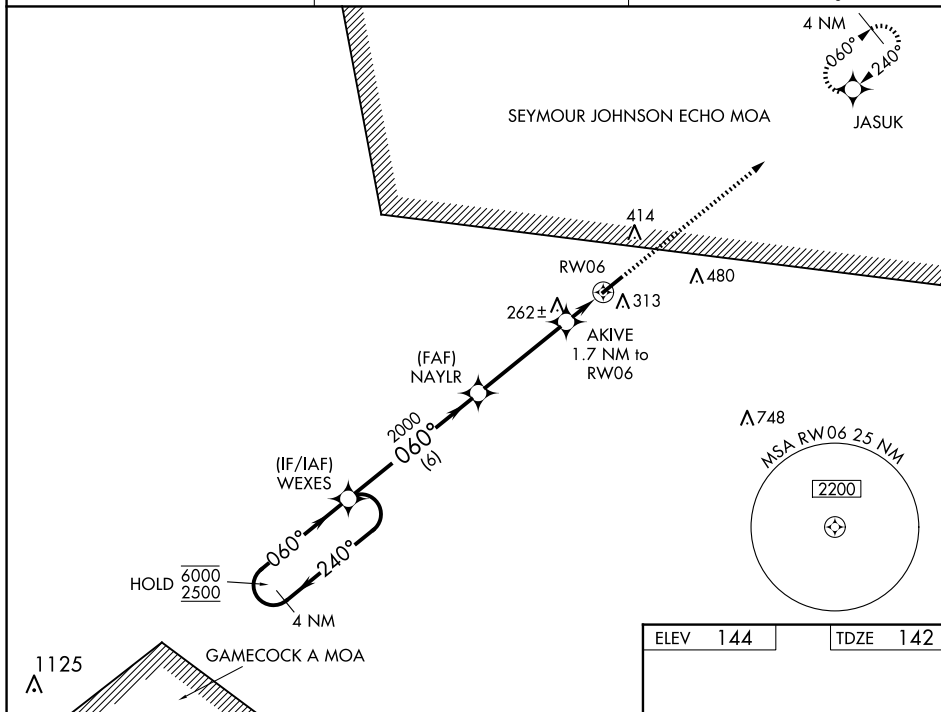
## CLINTON-SAMPSON COUNTY (CTZ)

RNP APCH - GPS.

**T** Rwy 6 helicopter visibility reduction below  $\frac{3}{4}$  SM NA.  
**A** For uncompensated Baro-VNAV systems, LNAV/VNAV NA below -15°C or above 54°C.

**MISSED APPROACH:**  
Climb to 2500 direct  
JASUK and hold.

AWOS-3 <b>119.125</b>	FAYETTEVILLE APP CON <b>133.0 290.25</b>	UNICOM <b>122.8 (CTAF) 0</b>
--------------------------	---	---------------------------------



CLINTON, NORTH CAROLINA  
Amdt 2D 20APR23

34°58'N-78°22'W

CLINTON-SAMPSON COUNTY (CTZ)  
RNAV (GPS) RWY 6

SE-2, 10 JUL 2025 to 07 AUG 2025