

VOR/DME VIO 115.95 Chan 106 (Y)	APP CRS 142°	Rwy Idg 4763 TDZE 800 Apt Elev 800
---	------------------------	---

VOR RWY 12
HASTINGS (9D9)

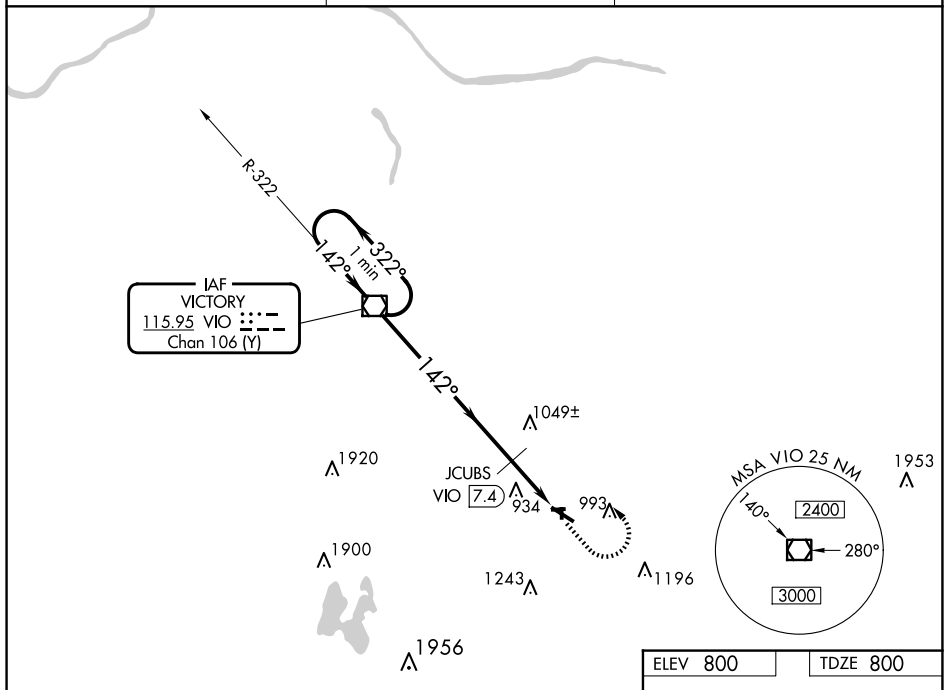
T Helicopter visibility reduction below $\frac{3}{4}$ SM NA. Use GRR altimeter setting; when not received, use Y70 altimeter setting and increase all MDA 20 feet. Increase JCUBS DME minimums S-12 visibility $\frac{1}{8}$ mile Cat C. Increase JCUBS fix minimum altitude 1700. Circling NA to Rwy 9, 18, 27, 36.



MISSED APPROACH: Climb to 2000, then climbing left turn to 3000 on VIO VOR/DME R-142 to VIO VOR/DME and hold.

GRR ASOS
118.725

GREAT LAKES APP CON ★
128.4 257.6

UNICOM
123.075 (CTAF) **L**



CATEGORY	A	B	C	D
S-12	1700-1¼	900 (900-1¼)	1700-2½ 900 (900-2½)	NA
 CIRCLING	1700-1¼	900 (900-1¼)	1700-2¾ 900 (900-2¾)	NA
JCUBS DME MINIMUMS				
S-12	1340-1	540 (600-1)	1340-1½ 540 (600-1½)	NA
 CIRCLING	1380-1 580 (600-1)	1440-1 640 (700-1)	1440-1¾ 640 (700-1¾)	NA

