

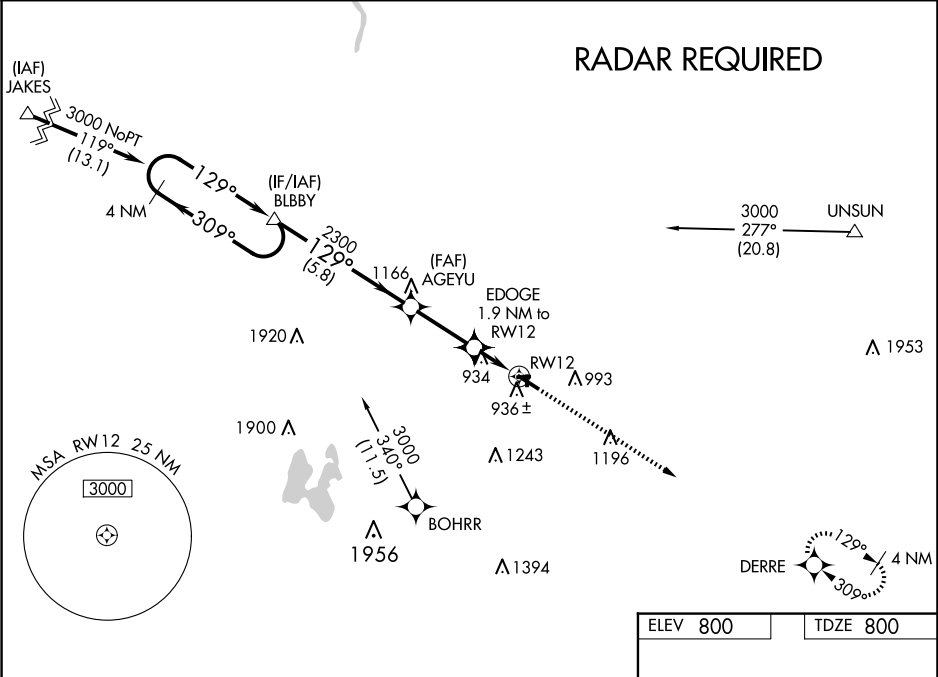
WAAS CH <b>53326</b> <b>W12A</b>	APP CRS <b>129°</b>	Rwy Idg TDZE Apt Elev	<b>4762</b> <b>800</b> <b>800</b>
--	------------------------	-----------------------------	---

RNAV (GPS) RWY 12

HASTINGS (9D9)

RNP APCH - GPS.	<div><div>▼</div><div>NA</div></div> <div>Circling NA to Rwy 9, 18, 27 and 36. Baro-VNAV NA. Use GRR altimeter setting; when not received, use Y70 altimeter setting: increase LPV DA to 1102 feet; increase LNAV/VNAV DA to 1260 feet and all visibilities <math>\frac{1}{8}</math> SM; increase all MDA 20 feet, and LNAV visibility Cat C <math>\frac{1}{8}</math> SM. Rwy 12 helicopter visibility reduction below <math>\frac{3}{4}</math> SM NA.</div>	MISSED APPROACH: Climb to 3000 direct DERRE and hold.
-----------------	--	--

GRR ASOS <b>118.725</b>	GREAT LAKES APP CON * <b>128.4 257.6</b>	UNICOM <b>123.075 (CTAF) 0</b>
----------------------------	---	-----------------------------------



4 NM Holding Pattern		VGSI and RNAV glidepath not coincident (VGSI Angle 4.00/TCH 34).		3000	DERRE
BLBBY		AGEYU		2300	EDGE 1.9 NM to RWY 12
GP 3.00° TCH 40		2300		1440	RWY 12
5.8 NM		2.7 NM		1.9 NM	
CATEGORY	A	B	C	D	
LPV DA	1087-1	287 (300-1)		NA	
LNAV/VNAV DA	1245-1 $\frac{3}{8}$	445 (500-1 $\frac{3}{8}$ )		NA	
LNAV MDA	1240-1	440 (500-1)	1240-1 $\frac{1}{4}$ 440 (500-1 $\frac{1}{4}$ )	NA	
CIRCLING	1380-1 580 (600-1)	1440-1 640 (700-1)	1440-1 $\frac{3}{4}$ 640 (700-1 $\frac{3}{4}$ )	NA	

MIRL Rwy 12-30 0

REIL Rwy 12 and 30 0