

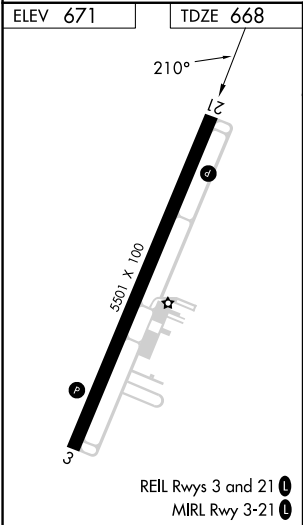
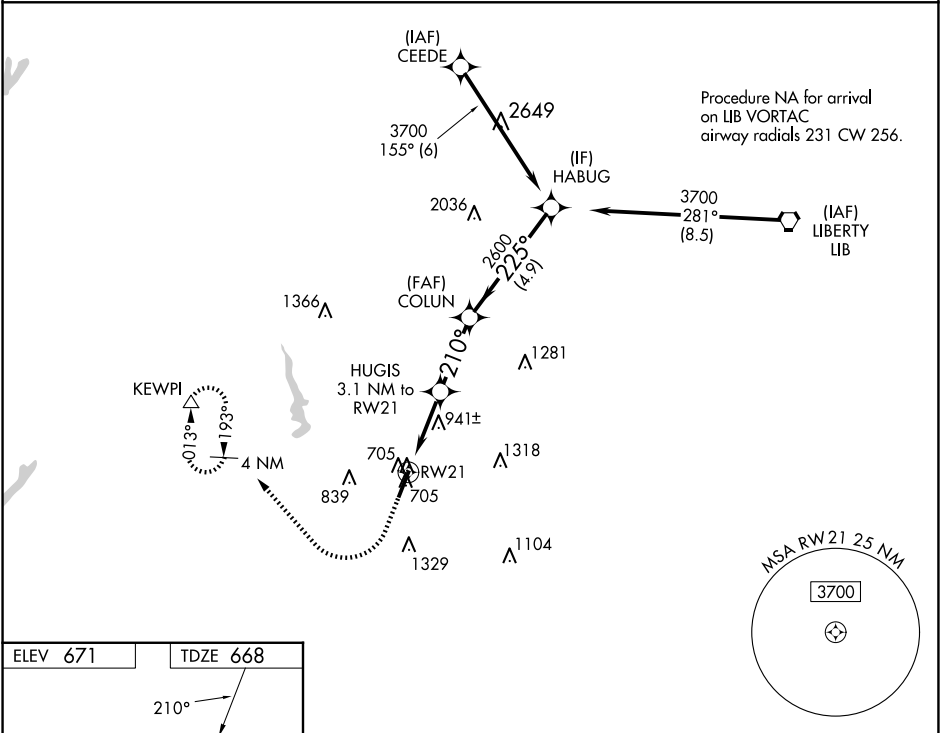
WAAS CH 53739 W21A	APP CRS 210°	Rwy Idg TDZE 668 Apt Elev 671
--	------------------------	---

RNAV (GPS) RWY 21

ASHEBORO RGNL (HBI)

RNP APCH-GPS. ▼ For uncompensated Baro-VNAV systems, LNAV/VNAV NA below -16°C (4°F) ▲ or above 54°C (130°F). Rwy 21 helicopter visibility reduction below ¾ SM NA.	MISSED APPROACH: Climb to 3000 then right turn direct KEWPI and hold.
--	--

AWOS-3 119.275	GREENSBORO APP CON 126.6 327.075	UNICOM 122.8 (CTAF) 0
--------------------------	--	--



<div>3000</div> <div><div><div>↑</div></div><div><div>↷</div></div></div> <div>KEWPI</div> <div>△</div>		<div>HABUG</div> <div>3700</div>		
<div>*LNAV only.</div> <div><div><div>RW21</div><div>1.6 NM</div></div><div><div>HUGIS</div><div>3.1 NM to RW21</div></div><div><div>*1.6 NM to RW21</div></div><div><div>COLUN</div><div>2600</div></div><div><div>210°</div></div><div><div>225°</div></div><div><div>2600</div></div><div><div>1.5 NM</div></div><div><div>2.8 NM</div></div><div><div>4.9 NM</div></div></div> <div><div>GP 3.00°</div><div>TCH 40</div></div>				
CATEGORY	A	B	C	D
LPV DA	918-¾		250 (300-¾)	
LNAV/VNAV DA	1069-1⅛		401 (400-1⅛)	
LNAV MDA	1220-1	552 (600-1)	1220-1⅝	552 (600-1⅝)
<div>CIRCLING</div>	1300-1 629 (700-1)	1360-1 689 (700-1)	1680-3	1009 (1100-3)