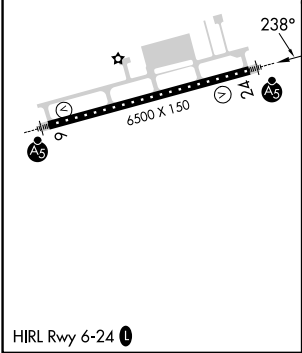
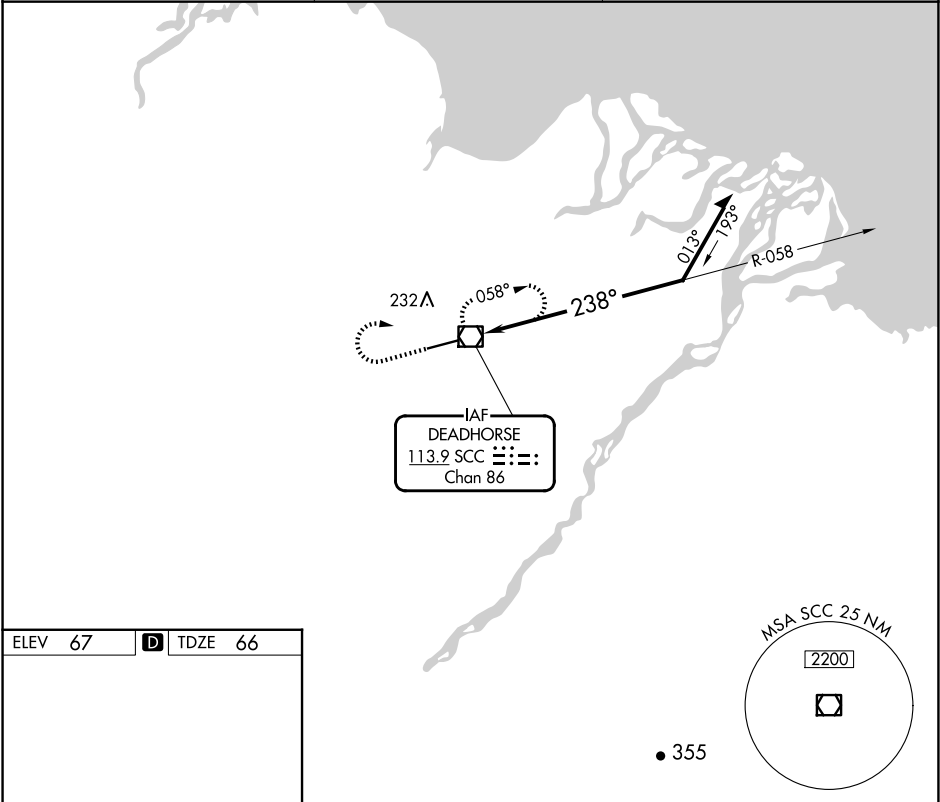


VOR/DME SCC	APP CRS	Rwy Idg	6500
<b>113.9</b>	<b>238°</b>	TDZE	<b>66</b>
Chan <b>86</b>		Apt Elev	<b>67</b>

VOR Y RWY 24

DEADHORSE (SCC) (PASC)

<div><div><div></div></div><div>MALSR</div><div><div></div></div></div>		MISSED APPROACH: Climb to 1500 then climbing right turn to 2000 direct SCC VOR/DME and hold, continue climb-in-hold to 2000.
AFIS <b>118.4</b>	ANCHORAGE CENTER <b>134.4 370.9</b>	DEADHORSE RADIO <b>123.6</b> (CTAF) <b>0</b>



ELEV 67 <b>D</b> TDZE 66		1500 2000 SCC		SCC VOR/DME		Remain within 10 NM	
HIRL Rwy 6-24 <b>0</b>		CATEGORY		A		B	
		S-24		580/24		514 (600-1/2)	
		CIRCLING		580-1		513 (600-1)	
				580/55		514 (600-1)	
				580-1 1/2		620-2	
				513 (600-1 1/2)		553 (600-2)	