

VOR/DME SCC	APP CRS	Rwy Idg	6500
113.9	058°	TDZE	67
Chan 86		Apt Elev	67

VOR RWY 6

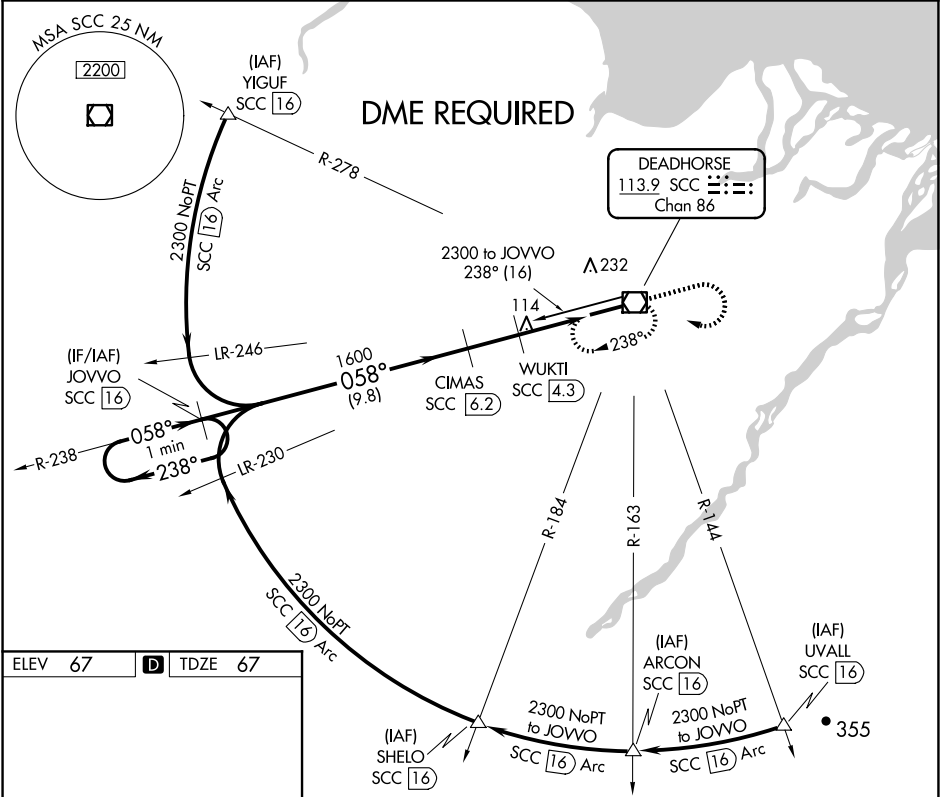
DEADHORSE (SCC) (PASC)

DME required.  
For inop ALS, increase S-6 Cats C/D/E to RVR 4500.

MALSR

MISSED APPROACH: Climb to 1500 then climbing right turn to 2000 direct SCC VOR/DME and hold, continue climb-in-hold to 2000.

AFIS	ANCHORAGE CENTER	DEADHORSE RADIO
118.4	134.4 370.9	123.6 (CTAF) 0



ELEV 67

TDZE 67

HIRL Rwy 6-24 0

One Minute Holding Pattern		JOVVO SCC 16	CIMAS SCC 6.2	WUKTI SCC 4.3	1500	2000	SCC
2300		238°	058°	058°	3.02° TCH 50	SCC 2.4	SCC 1.6
		9.8 NM	1.9 NM	1.9 NM	0.8		
CATEGORY	A	B	C	D	E		
S-6	380/24 313 (400-½)						
CIRCLING	540-1	473 (500-1)	580-1½ 513 (600-½)	620-2	553 (600-2)		

AK, 12 JUN 2025 to 07 AUG 2025

AK, 12 JUN 2025 to 07 AUG 2025