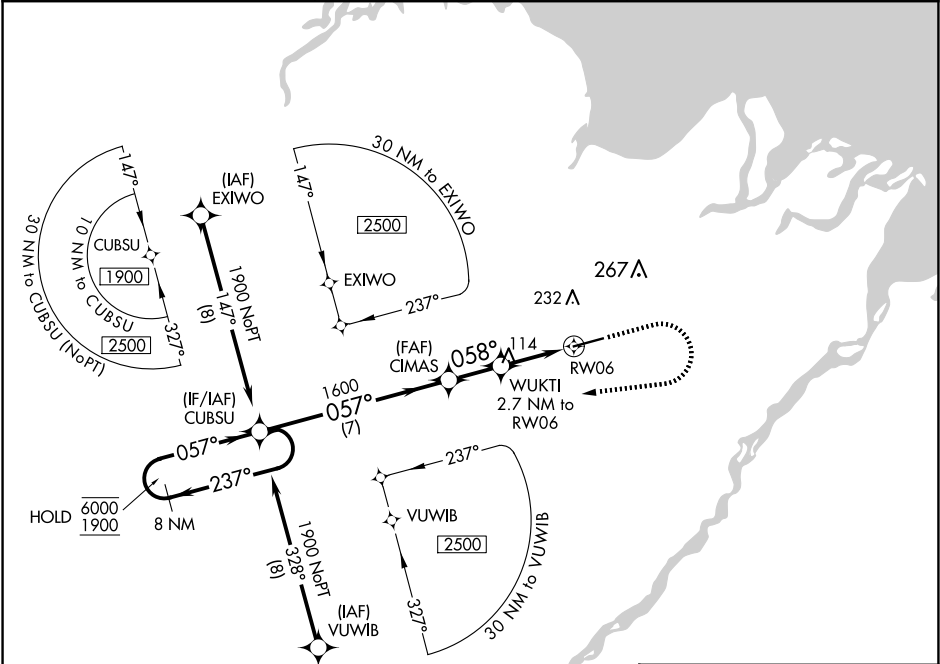


WAAS CH <b>49103</b> <b>W06A</b>	APP CRS <b>058°</b>	Rwy Idg <b>6500</b> TDZE <b>67</b> Apt Elev <b>67</b>	<b>RNAV (GPS) Z RWY 6</b> DEADHORSE (SCC) (PASC)
--	------------------------	---	---

RNP APCH. ▼ ▲ For uncompensated Baro-VNAV systems, LNAV/VNAV NA below -17°C or above 54°C. For inop ALS, increase LPV Cat E visibility to RVR 4000, and increase LNAV/VNAV all Cats and LNAV Cats C/D/E visibility to RVR 4500. # RVR 1800 authorized with use of FD or AP or HUD to DA.	MALSR AS	MISSED APPROACH: Climb to 500 then climbing right turn to 1900 direct CUBSU and hold.
--	-------------	---

AFIS <b>118.4</b>	ANCHORAGE CENTER <b>134.4 370.9</b>	DEADHORSE RADIO <b>123.6 (CTAF) 0</b>
----------------------	--	--



VGSi and RNAV glidepath not coincident (VGSi Angle 3.00/TCH 50).						500	1900	CUBSU
8 NM Holding Pattern						↑	↷	✦
GP 3.00° TCH 58						* LNAV only.		
CUBSU						WUKTI 2.7 NM to RW06		
CIMAS						* 0.8 NM to RW06		
1600						RW06		
057°						058°		
1600						* 980		
7 NM						1.9 NM		
1.9 NM						0.8		
CATEGORY	A	B	C	D	E			
LPV DA#	267/24 200 (200-½)							
LNAV/VNAV DA	369/24 302 (400-½)							
LNAV MDA	380/24 313 (400-½)							
CIRCLING	540-1	473 (500-1)	580-1½ 513 (600-1½)	620-2	553 (600-2)			
HIRL Rwy 6-24								

ELEV 67

D

TDZE 67

058° to RW06

6500 X 150

AG

AG