

WAAS CH 69203 W24A	APP CRS 238°	Rwy Idg TDZE 66 Apt Elev 67
--	------------------------	---

RNAV (GPS) Z RWY 24

DEADHORSE (SCC) (PASC)

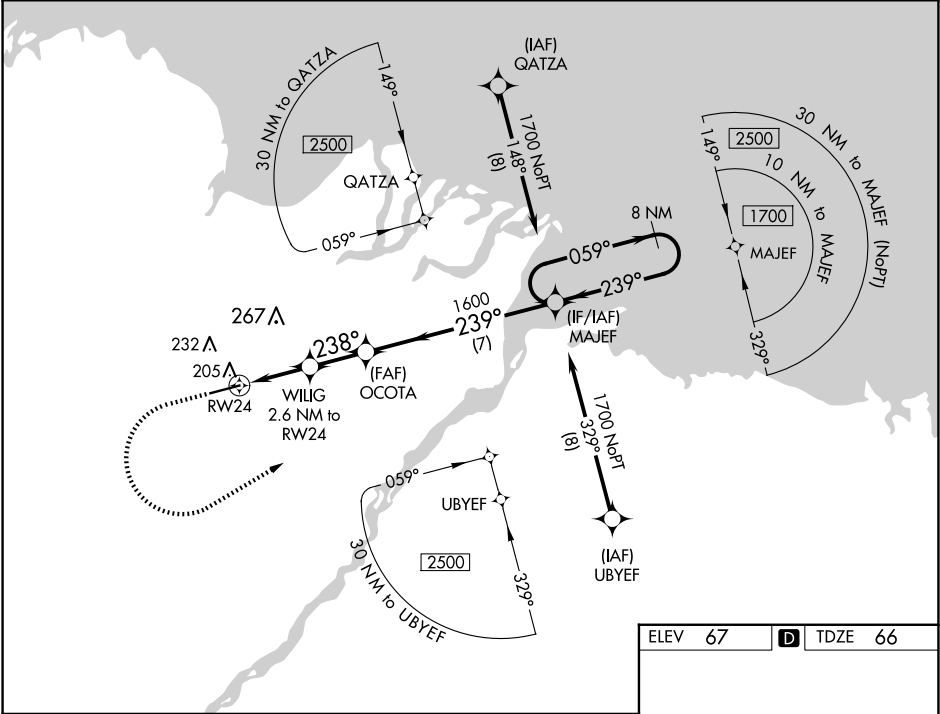
▼

For uncompensated Baro-VNAV systems, LNAV/VNAV NA below -17°C (2°F) or above 54°C (130°F). DME/DME RNP-0.3 NA.
For inop ALS, increase LPV Cat E visibility to RVR 4000, LNAV/VNAV all Cats visibility to RVR 5000, and LNAV Cat E visibility to RVR 6000.
RVR 1800 authorized with use of FD or AP or HUD to DA.

MALSR

MISSED APPROACH: Climb to 500 then climbing left turn to 1700 direct MAJEF and hold.

AFIS 118.4	ANCHORAGE CENTER 134.4 370.9	DEADHORSE RADIO 123.6 (CTAF) 0
----------------------	--	--



500

1700

MAJEF

* LNAV only.

WILIG
2.6 NM to RW24

OCOTA
1600

MAJEF
8 NM Holding Pattern

RW24

238°

239°

1600

1700

GP 3.00°
TCH 54

1.1 NM to RW24

940*

1.1

1.5 NM

2.1 NM

7 NM

CATEGORY	A	B	C	D	E
LPV DA#	266/24 200 (200-½)				
LNAV/VNAV DA	381/30 315 (400-¾)				
LNAV MDA	460/24	394 (400-½)	460/35	394 (400-¾)	
CIRCLING	540-1	473 (500-1)	580-1½ 513 (600-1½)	620-2	553 (600-2)

ELEV 67

TDZE 66

HIRL Rwy 6-24 0

AK, 12 JUN 2025 to 07 AUG 2025

AK, 12 JUN 2025 to 07 AUG 2025