

LOC/DME I-SCC

**109.3**

Chan 30

APP CRS

**238°**

Rwy Idg  
TDZE  
Apt Elev

**6500  
66  
67**

**LOC BC RWY 24**

DEADHORSE (SCC) (PASC)

DME required.

For inop ALS, increase \*S-LOC 24 Cat E visibility to RVR 5000 and S-LOC 24 Cat C/D/E visibility to RVR 5500.

MALSR

MISSED APPROACH: Climb to 1500 then climbing left turn to 4000 on heading 100° and SCC VOR/DME R-144 to UVALL/SCC VOR/DME 16 DME and hold.

\*Missed approach requires minimum climb of 243 feet per NM to 780.

AFIS

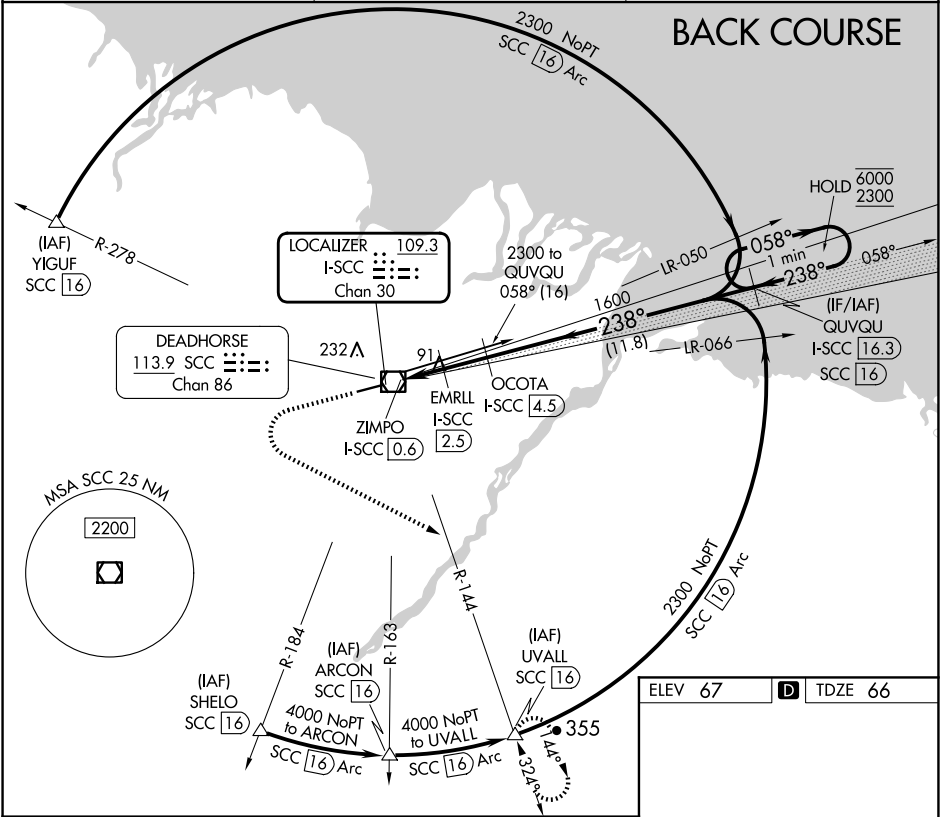
**118.4**

ANCHORAGE CENTER

**134.4 370.9**

DEADHORSE RADIO

**123.6 (CTAF) 0**



1500

4000

hdg 100°

SCC

R-144

UVALL

△

Use I-SCC DME when on the localizer course.

QUVQU

I-SCC 16.3

One Minute Holding Pattern

EMRLL

I-SCC 2.5

ZIMPO

I-SCC 0.6

OCOTA

I-SCC 4.5

3.00°

TCH 54

238°

1600

058°

6000

238°

2300

Disregard GS indications.

0.8

1.9 NM

2 NM

11.8 NM

HIRL Rwy 6-24 0