

WAAS CH 73027 W36A	APP CRS 359°	Rwy Idg 5210 TDZE 74 Apt Elev 75
--	------------------------	---

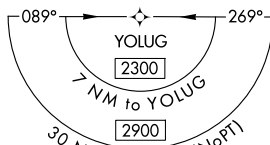
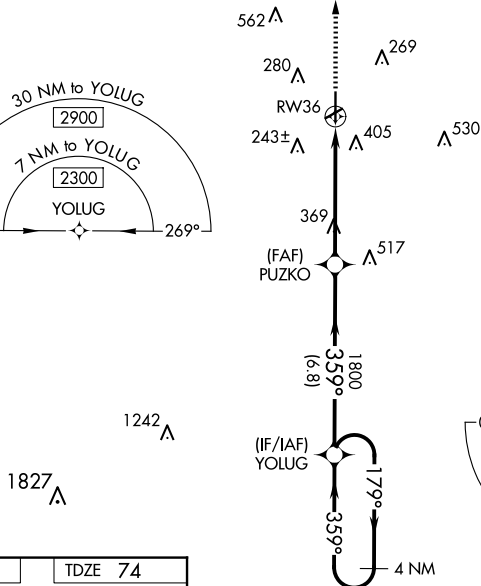
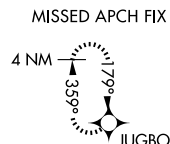
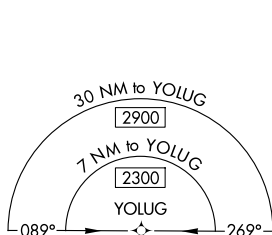
RNAV (GPS) RWY 36
ST LANDRY PARISH (OPL)

MISSED APPROACH: Climb to 2000 direct JUGBO and hold.

Baro-VNAV NA when using Lafayette altimeter setting. For uncompensated Baro-VNAV systems, LNAV/VNAV NA below -15°C (5°F) or above 43°C (109°F). When VGSi inop, Straight-in/Circling Rwy 36 procedure NA at night. DME/DME RNP-0.3 NA. Visibility reduction by helicopters NA. Circling to Rwy 6/24 NA at night. When local altimeter setting not received, use Lafayette altimeter setting: Increase LPV DA to 407 feet, LNAV/VNAV DA to 749 feet, and visibility LPV all Cats ½ SM and LNAV/VNAV all Cats ¼ SM; increase all MDA 60 feet and visibility LNAV Cats C and D ½ SM and Circling Cat C and D ¼ SM.

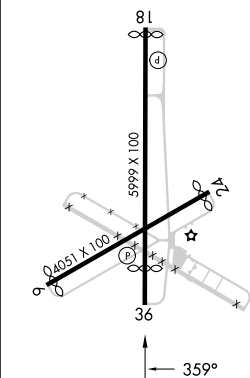
AWOS-3PT
118.775

LAFAYETTE APP CON★
128.7 268.7

UNICOM
123.0 (CTAF) 

ELEV 75

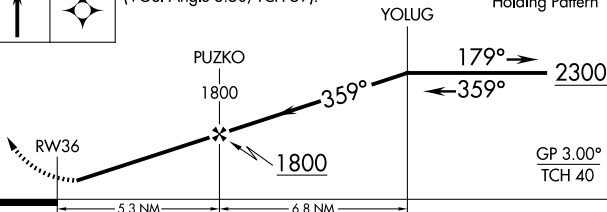
TDZE 74



REIL Rwy 18 and 36 **L**
MIRI Rwy 18-36 **L**

2000	JUGBO	VGSI and RNAV glidepath not coincident (VGSI Angle 3.50/TCH 59).
------	-------	--

4 NM
Holding Pattern



CATEGORY	A	B	C	D
LPV DA	351-1 277 (300-1)			
LNAV/VNAV DA	693-2¼ 619 (700-2¼)			
LNAV MDA	620-1	546 (600-1)	620-1½	546 (600-1½)
CIRCLING	780-1	705 (800-1)	780-2 705 (800-2)	920-2¾ 845 (900-2¾)

RNAV (GPS) RWY 36