

WAAS CH 86229 W18A	APP CRS 179°	Rwy Idg TDZE Apt Elev	5849 71 75
--	------------------------	-----------------------------	---------------------------------------

RNAV (GPS) RWY 18

ST LANDRY PARISH (OPL)

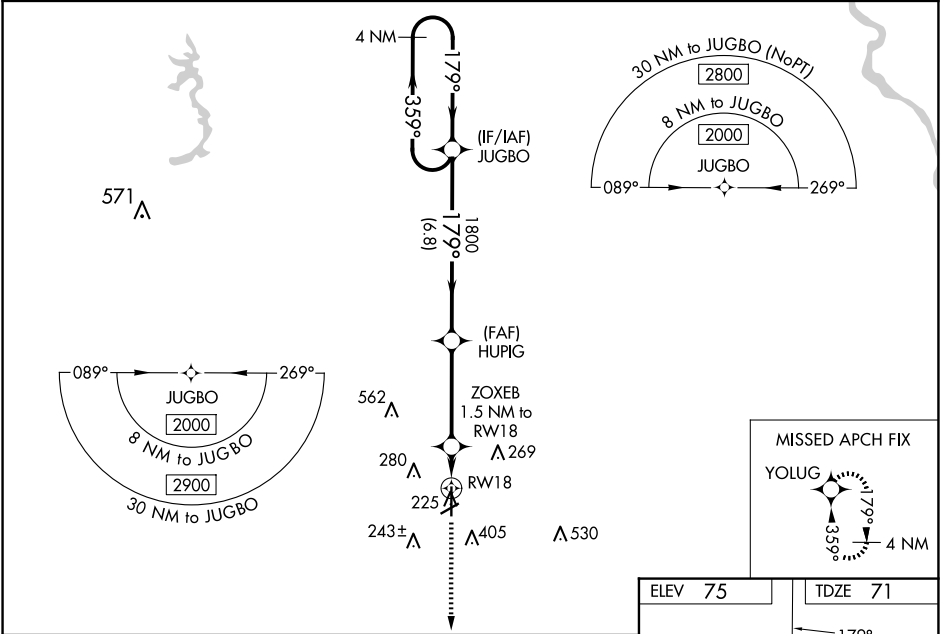
▼

NA

Baro-VNAV NA when using Lafayette altimeter setting. For uncompensated Baro-VNAV systems, LNAV/VNAV NA below -15°C (5°F) or above 43°C (109°F). When VGSI inop, Straight-in/Circling Rwy 18 procedure NA at night. DME/DME RNP-0.3 NA. Helicopter visibility reduction below 1 SM NA. Circling to Rwy 6/24 NA at night. When local altimeter setting not received, use Lafayette altimeter setting: Increase LPV DA to 377 feet, LNAV/VNAV DA to 442 feet, and visibility LNAV/VNAV all Cats ¼ SM; increase all MDA 60 feet and visibility LNAV Cat C and D and Circling Cat C and D ¼ SM.

MISSED APPROACH: Climb to 2300 direct YOLUG and hold.

AWOS-3PT 118.775	LAFAYETTE APP CON ★ 128.7 268.7	UNICOM 123.0 (CTAF) 0
----------------------------	---	---------------------------------



4 NM Holding Pattern		VGSI and RNAV glidepath not coincident (VGSI Angle 3.50/TCH 58).		2300	YOLUG
2000		JUGBO	HUIG	ZOXEB	*LNAV only.
GP 3.00° TCH 52		1800	1800	1.5 NM to RW18	
		6.8 NM	3.8 NM	1.5 NM	
CATEGORY	A	B	C	D	
LPV DA	321-1		250 (300-1)		
LNAV/VNAV DA	386-1		315 (400-1)		
LNAV MDA	480-1	409 (500-1)	480-1⅛	409 (500-1⅛)	
CIRCLING	780-1	705 (800-1)	780-2	920-2¾	
			705 (800-2)	845 (900-2¾)	

