

VOR ECS 108.2	APP CRS 323°	Rwy Idg TDZE Apt Elev 5310 4176 4176
-------------------------	------------------------	--

VOR RWY 32

MONDELL FLD (ECS)

▼

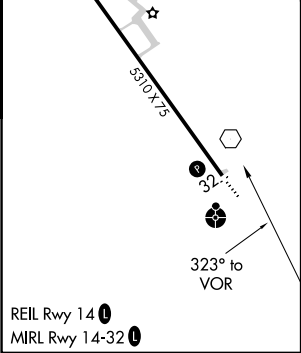
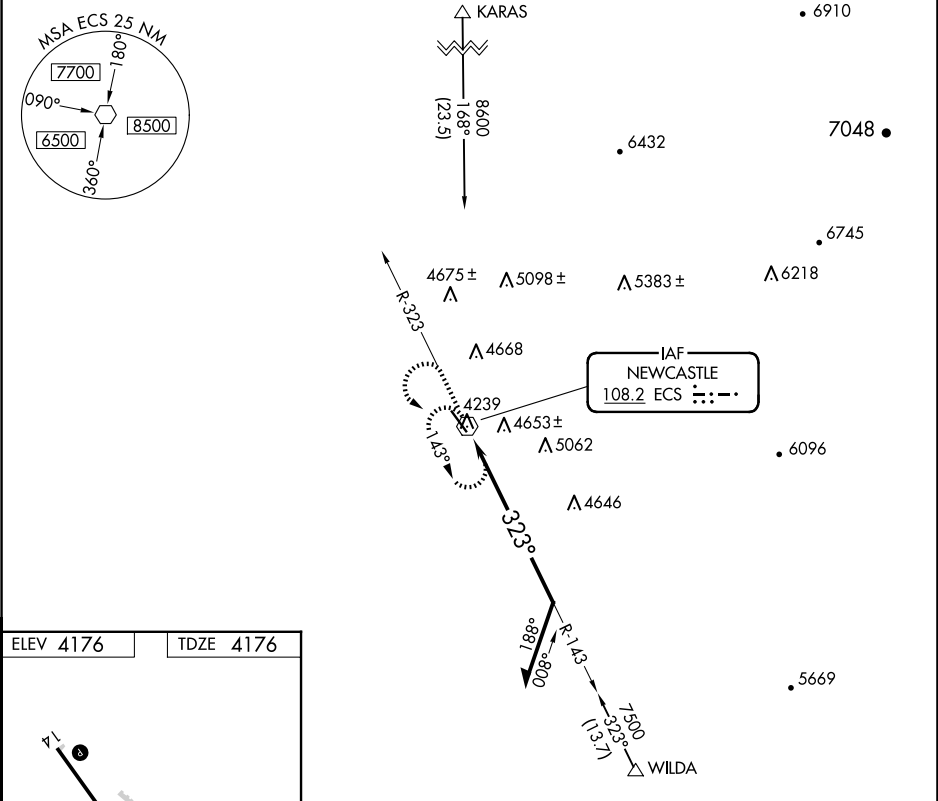
▲

When Newcastle altimeter setting not received, procedure NA. Circling NA northeast of Rwy 14-32.

ODALS

MISSED APPROACH: Climb to 6700 on ECS VOR R-323 then climbing left turn to 7500 direct ECS VOR and hold, continue climb-in-hold to 7500.

AWOS-3PT 118.0	DENVER CENTER 127.95 338.2	UNICOM 122.8 (CTAF) 0
--------------------------	--------------------------------------	---------------------------------



6700 ECS R-323		7500	ECS	ECS VOR 6800		Remain within 10 NM
				143°		6400
				323°		
CATEGORY	A	B	C	D		
S-32	4980-¾ 804 (900-¾)	4980-1 804 (900-1)	4980-2½ 804 (900-2½)	804 (900-2½)		
CIRCLING	4980-1 804 (900-1)	4980-1¼ 804 (900-1¼)	4980-2½ 804 (900-2½)	5000-2¾ 824 (900-2¾)		