

WAAS CH <b>42813</b> <b>W36A</b>	APP CRS <b>357°</b>	Rwy Idg TDZE <b>192</b> Apt Elev <b>213</b>	<b>RNAV (GPS) RWY 36</b> JASPER COUNTY/BELL FLD (JAS)
--	------------------------	---	--

RNP APCH-GPS

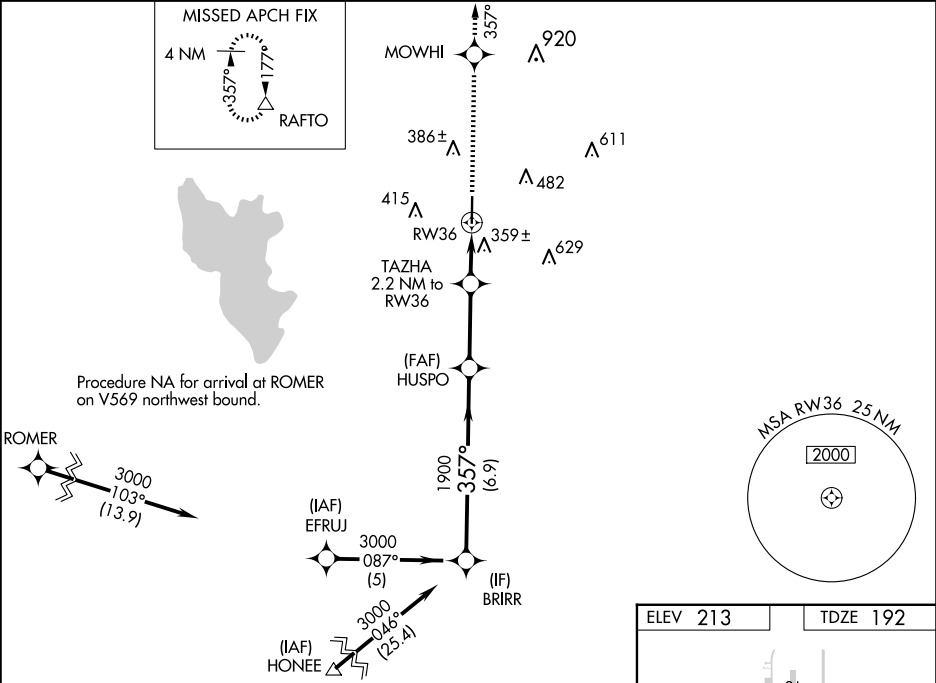
▼

⚠

Baro-VNAV NA when using De Ridder altimeter setting. For uncompensated Baro-VNAV systems, LNAV/VNAV NA below -15°C or above 54°C. Rwy 36 helicopter visibility reduction below ¾ SM NA. VDP NA when using De Ridder altimeter setting. When local altimeter setting not received, use De Ridder altimeter setting and increase LPV DA to 681 feet and all visibilities ¼ SM, increase LNAV/VNAV DA to 762 feet and all visibilities ¼ SM, increase all MDAs 100 feet and LNAV visibility Cat C ½ SM, and Circling visibility Cat C ¼ SM.

MISSED APPROACH:  
Climb to 4000 direct MOWHI and via track 357° to RAFTO and hold.

AWOS-3 <b>118.375</b>	HOUSTON CENTER <b>126.95 363.05</b>	UNICOM <b>122.8 (CTAF) 0</b>
--------------------------	--	---------------------------------



Procedure Turn NA	BRIRR		VGSI and RNAV glidepath not coincident (VGSI Angle 3.50/TCH 45).		4000 ↑	MOWHI ✦	tr 357°	RAFTO △
	3000		HUSPO					
	357°		1900		TAZHA 2.2 NM to RW36			
	GP 3.00° TCH 41		*900		*1.2 NM to RW36			
		6.9 NM		3 NM		1 NM		1.2 NM
CATEGORY		A		B		C		D
LPV DA		594-1⅓		402 (400-1⅓)				NA
LNAV/ VNAV DA		675-1⅓		483 (500-1⅓)				NA
LNAV MDA		680-1 488 (500-1)		680-1⅓ 488 (500-1⅓)				NA
CIRCLING		740-1 527 (600-1)		800-1½ 587 (600-1½)				NA

