

WAAS
CH **87013**
W18A

APP CRS
177°

Rwy ldg
TDZE **213**
Apt Elev **213**

RNAV (GPS) RWY 18

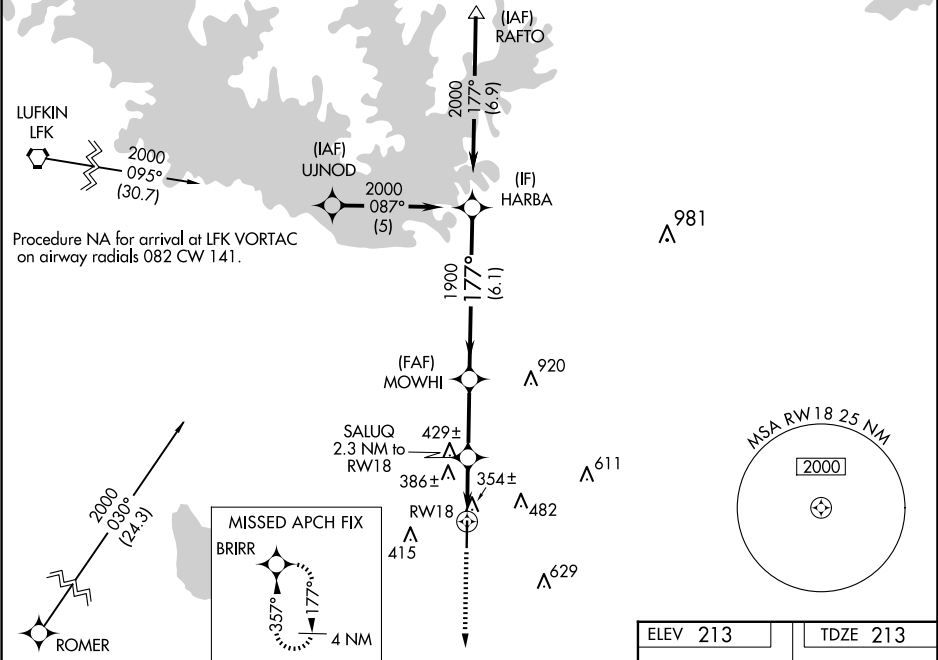
JASPER COUNTY/BELL FLD (JAS)

RNP APCH-GPS.

▼ Baro-VNAV NA when using De Ridder altimeter setting. For uncompensated Baro-VNAV systems, LNAV/VNAV NA below -15°C or above 54°C. Rwy 18 helicopter visibility reduction below ¾ SM NA. VDP NA when using De Ridder altimeter setting. When local altimeter setting not received, use De Ridder altimeter setting and increase LPV DA to 654 feet and all visibilities ¾ SM. Increase LNAV/VNAV DA to 817 feet and all visibilities ¾ SM. Increase all MDAs 100 feet and LNAV visibility Cat C ¾ SM, and Circling visibility Cat C ½ SM.

MISSED APPROACH: Climb to 3000 direct BRIRR and hold.

AWOS-3 118.375	HOUSTON CENTER 126.95 363.05	UNICOM 122.8 (CTAF)
--------------------------	--	-------------------------------



3000
↑
* LNAV only

BRIRR

VGSI and RNAV glidepath not coincident
(VGSI Angle 3.50/TCH 41).

HARBA

Procedure Turn NA

2.3 NM to RW18

1.2 NM to RW18

RW18

980*

1900

2000

GP 3.00°

TCH 41

1.2 NM

1.1 NM

2.8 NM

6.1 NM

CATEGORY	A	B	C	D
LPV DA	567-1	354 (400-1)		NA
LNAV/VNAV DA	730-1⅓	517 (600-1⅓)		NA
LNAV MDA	700-1	487 (500-1)	700-1⅓ 487 (500-1⅓)	NA
CIRCLING	740-1	527 (600-1)	800-1½ 587 (600-1½)	NA

