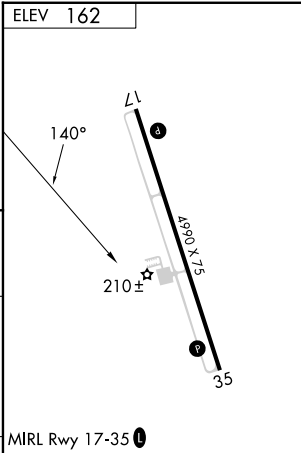
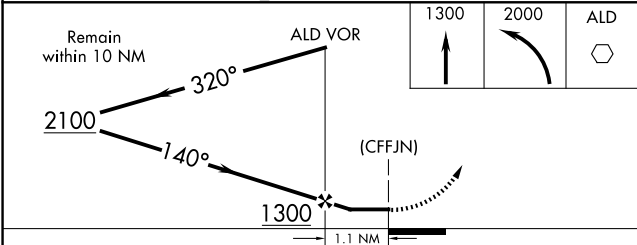
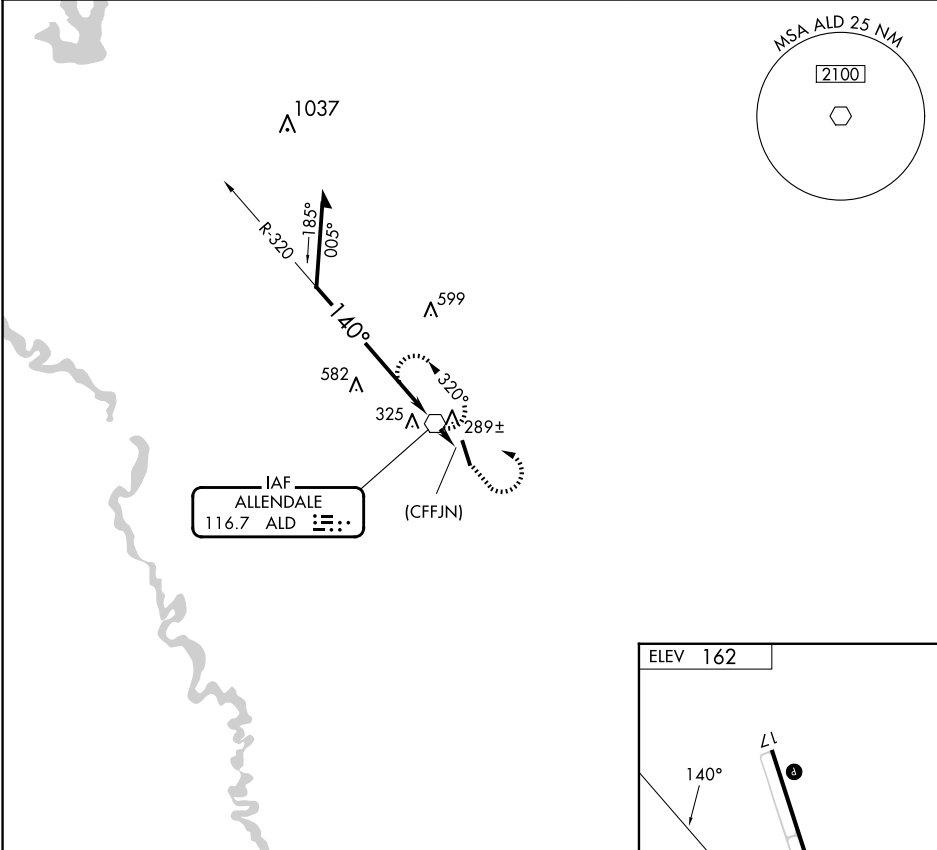


VOR	ALD	APP CRS	Rwy Idg	N/A
116.7		140°	TDZE	N/A
			Apt Elev	162

VOR-A
ALLENDALE COUNTY (A/QX)

<div><div></div><div></div></div> <div>When local altimeter setting not received, use Augusta Rgnl at Bush Fld altimeter setting.</div>	MISSED APPROACH: Climb to 1300, then climbing left turn to 2000 direct ALD VOR and hold.
---	--

AWOS-3PT 118.95	JACKSONVILLE CENTER 132.925 363.2	UNICOM 122.8 (CTAF) 0
--------------------	--------------------------------------	--------------------------



CATEGORY	A	B	C	D	FAF to MAP 1.1 NM
CIRCLING	860-1	698 (700-1)	NA		Knots 60 90 120 150 180 Min:Sec 1:06 0:44 0:33 0:26 0:22

SE-2, 10 JUL 2025 to 07 AUG 2025

SE-2, 10 JUL 2025 to 07 AUG 2025