

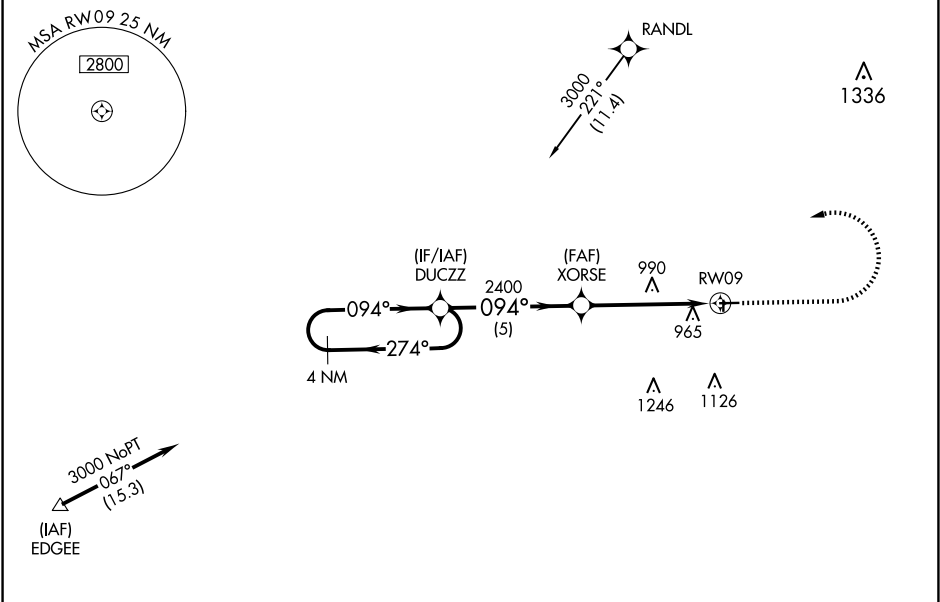
WAAS CH 93828 W09A	APP CRS 094°	Rwy Idg 3882 TDZE 779 Apt Elev 781
--	------------------------	---

RNAV (GPS) RWY 9

FULTON COUNTY (USE)

RNP APCH - GPS.	MISSED APPROACH: Climb to 2100 then climbing left turn to 3000 direct DUCZZ and hold.
For uncompensated Baro-VNAV systems, LNAV/VNAV NA below -16°C or above 54°C. Circling NA to Rwys 18 and 36. Rwy 9 helicopter visibility reduction below 1 SM NA. Procedure NA at night.	

AWOS-3P 127.375	TOLEDO APP CON 134.35 317.55	UNICOM 123.0 (CTAF) 0
---------------------------	--	---------------------------------



<div>4 NM Holding Pattern</div> <div><div>3000</div><div>← 274°</div><div>094° →</div><div>GP 3.00° TCH 40</div></div> <div><div>VGSI and RNAV glidepath not coincident (VGSI Angle 3.00/TCH 24).</div><div>DUCZZ</div><div>XORSE</div><div>2400</div><div>2400</div><div>RW09</div><div>5 NM</div><div>5 NM</div></div> <div><div>2100</div><div>3000</div><div>DUCZZ</div></div>					<div>ELEV 781</div> <div>TDZE 779</div>	
<div><div>094° to RW09</div><div>81</div><div>3882 X 75</div><div>27</div><div>2113 X 75</div><div>36</div></div>						
CATEGORY	A	B	C	D		
LPV DA	1109-1 330 (400-1)					
LNAV/VNAV DA	1198-1½ 419 (500-1½)					
LNAV MDA	1300-1 521 (600-1)		1300-1½ 521 (600-1½)			
CIRCLING	1320-1 539 (600-1)		1480-2 699 (700-2)		1480-2¼ 699 (700-2¼)	
					REIL Rwys 9 and 27 0 MIRL Rwy 9-27 0	