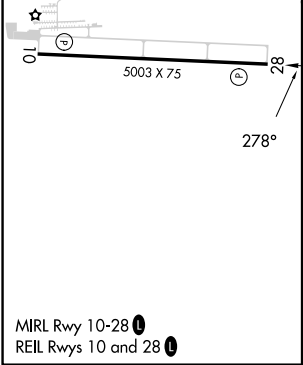
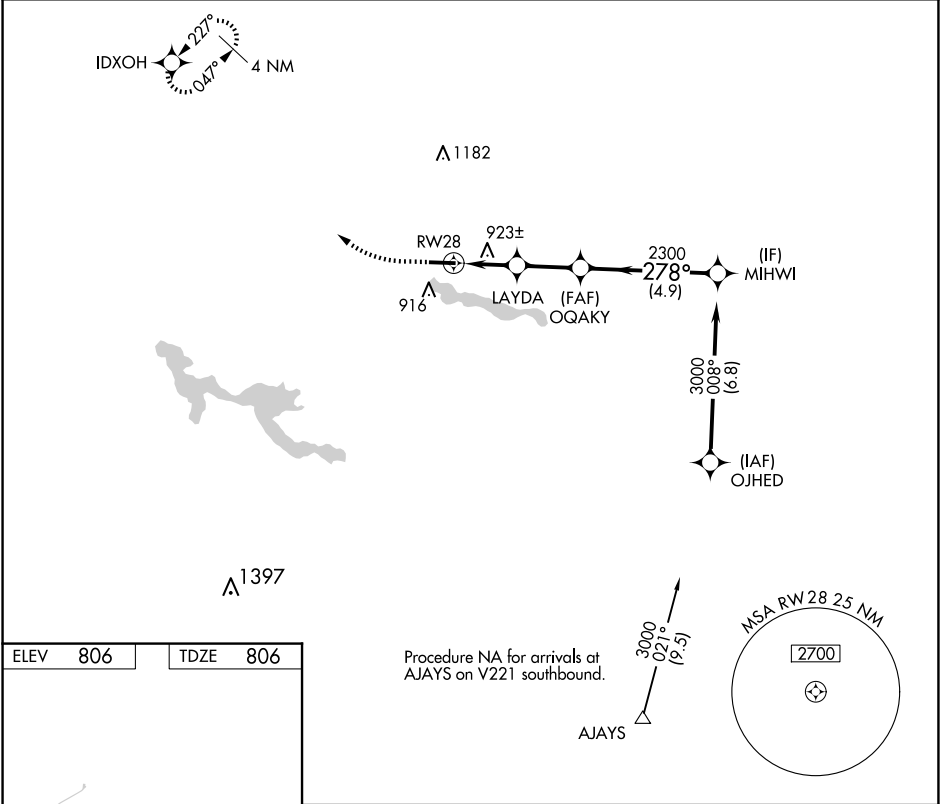


APP CRS	Rwy Idg	5003
278°	TDZE	806
	Apt Elev	806

RNAV (GPS) RWY 28
HUNTINGTON MUNI (HHG)

RNP APCH - GPS.	MISSED APPROACH: Climb to 1700 then climbing right turn to 2600 direct IDXOH and hold.
▼ Rwy 28 helicopter visibility reduction below ¾ SM NA.	

AWOS-3PT 126.575	FORT WAYNE APP CON 127.2 284.6	UNICOM 122.8 (CTAF) 0
---------------------	-----------------------------------	--------------------------



1700	2600	IDXOH	VGSI and descent angles not coincident (VGSI Angle 3.00/TCH 49).	MIHWI
↑	↶	✧		
			LAYDA 3.00° TCH 45	3000
			1.1 NM to RWY 28	
			1560	
			2300	
			278°	
			4.9 NM	
			2.3 NM	
			1.2 NM	
			1.1 NM	
CATEGORY	A	B	C	D
LNAV MDA	1200-1	394 (400-1)	1200-1½	394 (400-1½)
CIRCLING	1300-1	494 (500-1)	1460-1¾ 654 (700-1¾)	1540-2¼ 734 (800-2¼)

EC-2, 10 JUL 2025 to 07 AUG 2025

EC-2, 10 JUL 2025 to 07 AUG 2025