

NC-2, 10 JUL 2025 to 07 AUG 2025

BROKEN BOW, NEBRASKA

AL-5766 (FAA)

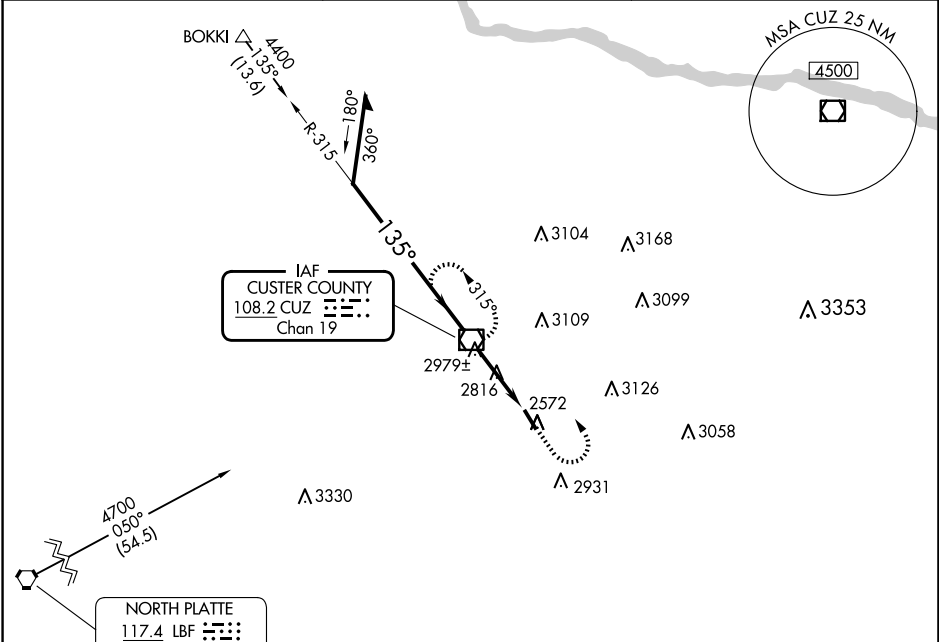
24025

VOR/DME CUZ	APP CRS	Rwy Idg	4203
108.2	135°	TDZE	2546
Chan 19		Apt Elev	2546

VOR RWY 14
BROKEN BOW MUNI/KEITH GLAZE FLD (BBW)

<p>When local altimeter setting not received; use North Platte Rgnl/Lee Bird Fld altimeter setting. Rwy 14 helicopter visibility reduction below ¾ SM NA.</p>	MISSED APPROACH: Climb to 4400 then left turn direct CUZ VOR/DME and hold.
---	--

ASOS 120.0	DENVER CENTER 132.7 226.675	UNICOM 122.8 (CTAF) 0
---------------	--------------------------------	--------------------------



CUZ VOR/DME				ELEV 2546	TDZE 2546
Remain within 10 NM				CUZ	
4400				135°	
3600				4203 X 75	
3.2 NM				0.65 UP	
CATEGORY	A	B	C	D	
S-14	3240-1	694 (700-1)	NA		
CIRCLING	3280-1	734 (800-1)	NA		
NORTH PLATTE RGNL/LEE BIRD FLD ALTIMETER SETTING MINIMUMS					
S-14	3380-1	3380-1¼	NA		
	834 (900-1)	834 (900-1¼)			
CIRCLING	3440-1¼	894 (900-1¼)	NA		
				REIL Rwy 14 0	
				MIRL Rwy 14-32 0	
				FAF to MAP 3.2 NM	
				Knots	60 90 120 150 180
				Min:Sec	3:12 2:08 1:36 1:17 1:04

BROKEN BOW, NEBRASKA

BROKEN BOW MUNI/KEITH GLAZE FLD (BBW)

Amdt 4E 18MAY23

41°26'N-99°39'W

VOR RWY 14

NC-2, 10 JUL 2025 to 07 AUG 2025