

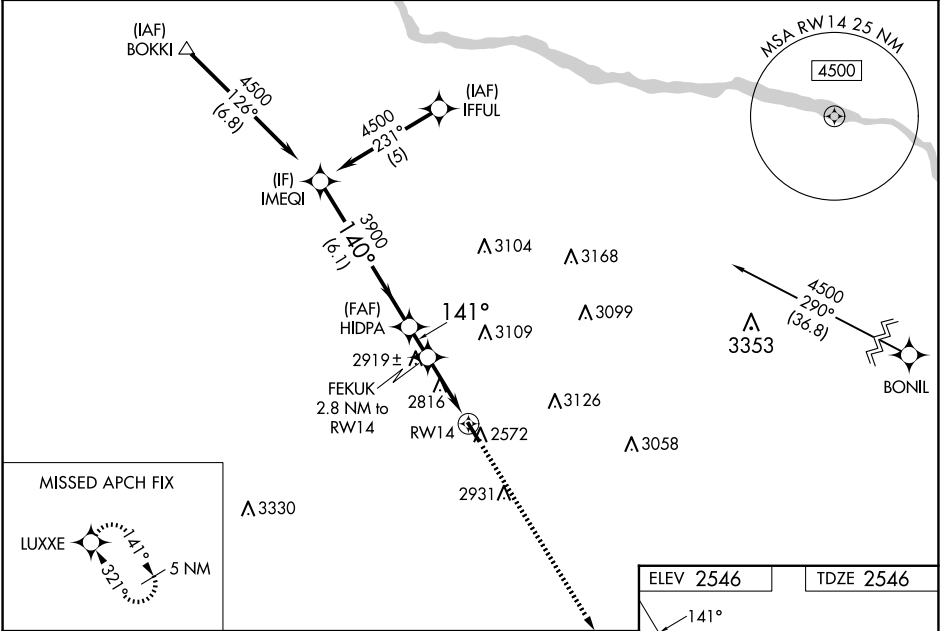
RNP APCH - GPS.

⚠

For uncompensated Baro-VNAV systems, LNAV/VNAV NA below -7°C or above 54°C. When local altimeter setting not received, use LBF altimeter setting: increase LPV DA to 2947 feet and all visibilities ½ SM; increase LNAV/VNAV DA to 3337 feet and all visibilities ¾ SM; increase all MDAs 160 feet and LNAV visibility Cat B ¾ SM, and Circling visibility Cat B ¾ SM. Baro/VNAV and VDP NA when using LBF altimeter setting. Rwy 14 helicopter visibility reduction below ¾ SM NA.

MISSED APPROACH: Climb to 4300 direct LUXXE and hold.

ASOS 120.0	DENVER CENTER 132.7 226.675	UNICOM 122.8 (CTAF) 0
---------------	--------------------------------	--------------------------



IMEQI		HIDPA		FEKUK		RWY14	
4500		3900		2816		2572	
140°		141°		141°		141°	
GP 3.00°		3900		3480		4300	
TCH 40		1.3 NM		1 NM		1.9 NM	
6.1 NM		1.3 NM		1 NM		1.9 NM	
CATEGORY	A	B	C	D			
LPV DA	2801-1	255 (300-1)	NA				
LNAV/VNAV DA	3191-17/8	645 (700-17/8)	NA				
LNAV MDA	3180-1	634 (700-1)	NA				
CIRCLING	3180-1	634 (700-1)	NA				

ELEV 2546

TDZE 2546

141°

4300

LUXXE

4203 X 75

0.08 UP

REIL Rwy 14 0

MIRL Rwy 14-32 0