

WAAS CH 72732 W22A	APP CRS 217°	Rwy Idg TDZE 869 Apt Elev 869	6497
--	------------------------	---	-------------

RNAV (GPS) RWY 22

LEE C FINE MEML (AIZ)

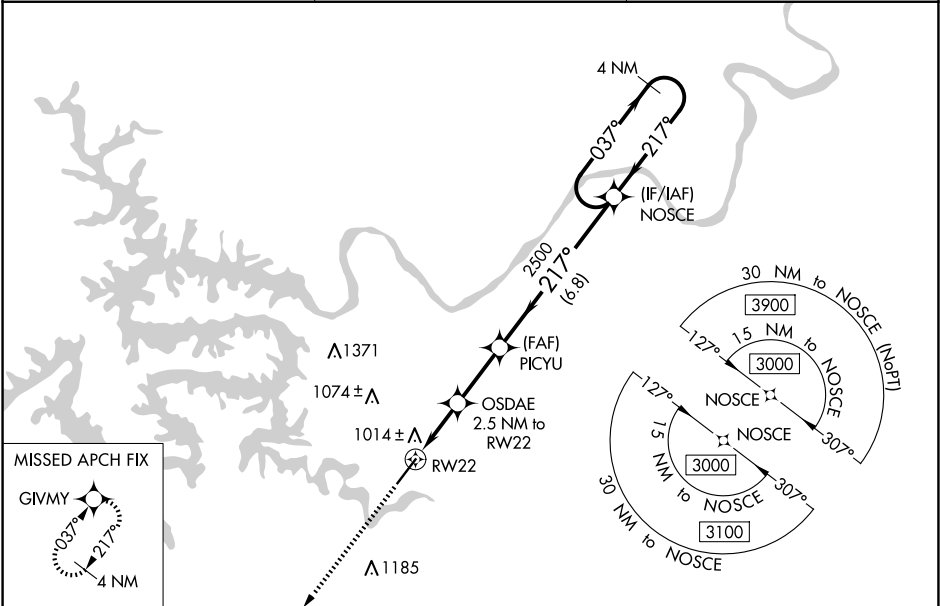
▼

▲

For uncompensated Baro-VNAV systems, LNAV/VNAV NA below -16°C or above 54°C.
DME/DME RNP-0.3 NA. Helicopter visibility reduction below 1 SM NA. When local altimeter setting not received, use Camdenton altimeter setting and increase all DAs 50 feet and all MDAs 60 feet, increase LNAV/VNAV all Cats visibility ¼ SM and LNAV Cat C and Circling Cat C ¼ SM. Baro-VNAV and VDP NA with Camdenton altimeter setting.

MISSED APPROACH:
Climb to 3100 direct GIVMY and hold.

AWOS-3PT 135.325	MIZZU APP CON 124.1 353.925	UNICOM 122.8 (CTAF) 0
----------------------------	---------------------------------------	---------------------------------



ELEV 869

TDZE 869

3100

GIVMY

*LNAV only

*1.2 NM to RW22

OSDAE 2.5 NM to RW22

PICUY 2500

NOSCE

4 NM Holding Pattern

217°

037°

217°

3000

GP 3.00°

TCH 42

1.2 NM

1.3 NM

2.5 NM

6.8 NM

CATEGORY	A		B	C	D
LPV DA	1119-1 250 (300-1)				NA
LNAV/VNAV DA	1164-1 295 (300-1)				NA
LNAV MDA	1280-1	411 (500-1)	1280-1½ 411 (500-1½)		NA
CIRCLING	1320-1 451 (500-1)	1380-1 511 (600-1)	1440-1½ 571 (600-1½)		NA

933

Δ

217°

Δ 913

Δ 935

Δ 913

Δ 913

Δ 913

Δ 913

Δ 913

Δ 913

Δ 913

Δ 913

Δ 913

Δ 913

Δ 913

Δ 913

Δ 913

Δ 913

Δ 913

Δ 913

Δ 913

Δ 913

Δ 913

Δ 913

Δ 913

Δ 913

Δ 913

Δ 913

Δ 913

Δ 913

Δ 913

Δ 913

Δ 913

Δ 913

Δ 913

Δ 913

Δ 913

Δ 913

Δ 913

Δ 913

Δ 913

Δ 913

Δ 913

Δ 913

Δ 913

Δ 913

Δ 913

Δ 913

Δ 913

Δ 913

Δ 913

Δ 913

Δ 913

Δ 913

Δ 913

Δ 913

Δ 913

Δ 913

Δ 913

Δ 913

Δ 913

Δ 913

Δ 913

Δ 913

Δ 913

Δ 913

Δ 913

Δ 913

Δ 913

Δ 913

Δ 913

Δ 913

Δ 913

Δ 913

Δ 913

Δ 913

Δ 913

Δ 913

Δ 913

Δ 913

Δ 913

Δ 913

Δ 913

Δ 913

Δ 913

Δ 913

Δ 913

Δ 913

Δ 913

Δ 913

Δ 913

Δ 913

Δ 913

Δ 913

Δ 913

Δ 913

Δ 913

Δ 913

Δ 913

Δ 913

Δ 913

Δ 913

Δ 913

Δ 913

Δ 913

Δ 913

Δ 913

Δ 913

Δ 913

Δ 913

Δ 913

Δ 913

Δ 913

Δ 913

Δ 913

Δ 913

Δ 913

Δ 913

Δ 913

Δ 913

Δ 913

Δ 913

Δ 913

Δ 913

Δ 913

Δ 913

Δ 913

Δ 913

Δ 913

Δ 913

Δ 913

Δ 913

Δ 913

Δ 913

Δ 913

Δ 913

Δ 913

Δ 913

Δ 913

Δ 913

Δ 913

Δ 913

Δ 913

Δ 913

Δ 913

Δ 913

Δ 913

Δ 913

Δ 913

Δ 913

Δ 913

Δ 913

Δ 913

Δ 913

Δ 913

Δ 913

Δ 913

Δ 913

Δ 913

Δ 913

Δ 913

Δ 913

Δ 913

Δ 913

Δ 913

Δ 913

Δ 913

Δ 913

Δ 913

Δ 913

Δ 913

Δ 913

Δ 913

Δ 913

Δ 913

Δ 913

Δ 913

Δ 913

Δ 913

Δ 913

Δ 913

Δ 913

Δ 913

Δ 913

Δ 913

Δ 913

Δ 913

Δ 913

Δ 913

Δ 913

Δ 913

Δ 913

Δ 913

Δ 913

Δ 913

Δ 913

Δ 913

Δ 913

Δ 913

Δ 913

Δ 913

Δ 913

Δ 913

Δ 913

Δ 913

Δ 913

Δ 913

Δ 913

Δ 913

Δ 913

Δ 913

Δ 913

Δ 913

Δ 913

Δ 913

Δ 913

Δ 913

Δ 913

Δ 913

Δ 913

Δ 913

Δ 913

Δ 913

Δ 913

Δ 913

Δ 913

Δ 913

Δ 913

Δ 913

Δ 913

Δ 913

Δ 913

Δ 913

Δ 913

Δ 913

Δ 913

Δ 913

Δ 913

Δ 913

Δ 913

Δ 913

Δ 913

Δ 913

Δ 913

Δ 913

Δ 913

Δ 913

Δ 913

Δ 913

Δ 913

Δ 913

Δ 913

Δ 913

Δ 913

Δ 913

Δ 913

Δ 913

Δ 913

Δ 913

Δ 913

Δ 913

Δ 913

Δ 913

Δ 913

Δ 913

Δ 913

Δ 913

Δ 913

Δ 913

Δ 913

Δ 913

Δ 913

Δ 913

Δ 913

Δ 913

Δ 913

Δ 913

Δ 913

Δ 913

Δ 913

Δ 913

Δ 913

Δ 913

Δ 913

Δ 913

Δ 913

Δ 913

Δ 913

Δ 913

Δ 913

Δ 913

Δ 913

Δ 913

Δ 913

Δ 913

Δ 913

Δ 913

Δ 913

Δ 913

Δ 913

Δ 913

Δ 913

Δ 913

Δ 913

Δ 913

Δ 913

Δ 913

Δ 913

Δ 913

Δ 913

Δ 913

Δ 913

Δ 913

Δ 913

Δ 913

Δ 913

Δ 913

Δ 913

Δ 913

Δ 913

Δ 913

Δ 913

Δ 913

Δ 913

Δ 913

Δ 913

Δ 913

Δ 913

Δ 913

Δ 913

Δ 913

Δ 913

Δ 913

Δ 913

Δ 913

Δ 913

Δ 913

Δ 913

Δ 913

Δ 913

Δ 913

Δ 913

Δ 913

Δ 913

Δ 913

Δ 913

Δ 913

Δ 913

Δ 913

Δ 913

Δ 913

Δ 913

Δ 913

Δ 913

Δ 913

Δ 913

Δ 913

Δ 913

Δ 913

Δ 913

Δ 913

Δ 913

Δ 913

Δ 913

Δ 913

Δ 913

Δ 913

Δ 913

Δ 913

Δ 913

Δ 913

Δ 913

Δ 913

Δ 913

Δ 913

Δ 913

Δ 913

Δ 913

Δ 913

Δ 913

Δ 913

Δ 913

Δ 913

Δ 913

Δ 913

Δ 913

Δ 913

Δ 913

Δ 913

Δ 913

Δ 913

Δ 913

Δ 913

Δ 913

Δ 913

Δ 913

Δ 913

Δ 913

Δ 913

Δ 913

Δ 913

Δ 913

Δ 913

Δ 913

Δ 913

Δ 913

Δ 913

Δ 913

Δ 913

Δ 913

Δ 913

Δ 913

Δ 913

Δ 913

Δ 913

Δ 913

Δ 913

Δ 913

Δ 913

Δ 913

Δ 913

Δ 913