

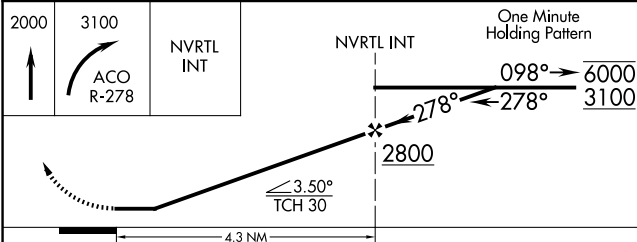
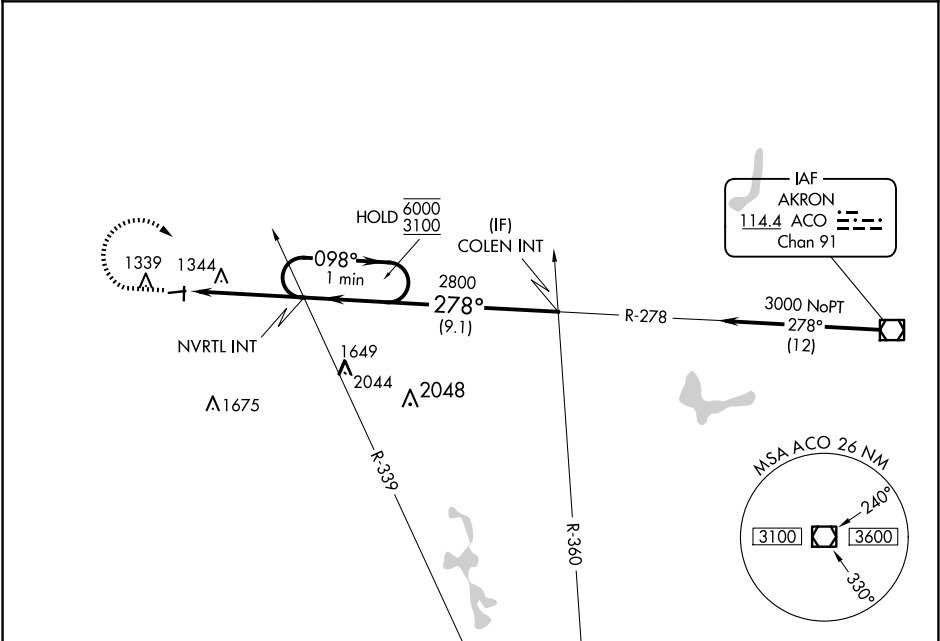
VOR/DME ACO	APP CRS	Rwy Idg	3556
114.4	278°	TDZE	1183
Chan 91		Apt Elev	1190

VOR RWY 27  
MEDINA MUNI (1G5)

**▼** Rwy 27 helicopter visibility reduction below ¾ SM NA.  
**⚠** NA Circling Rwy 1, 9, 19 NA at night. Use Cleveland-Hopkins  
Intl altimeter setting.

MISSED APPROACH: Climb to 2000 then climbing right  
turn to 3100 on ACO VOR/DME R-278 to NVRTL INT  
and hold, continue climb-in-hold to 3100.

CLE ASOS 127.85	CLEVELAND APP CON 125.35 346.325	UNICOM 123.0 (CTAF) 0
--------------------	-------------------------------------	--------------------------



CATEGORY	A	B	C	D
S-27	1780-1	597 (600-1)	1780-1¾ 597 (600-1¾)	NA
CIRCLING	1780-1	590 (600-1)	1780-1¾ 590 (600-1¾)	NA

