

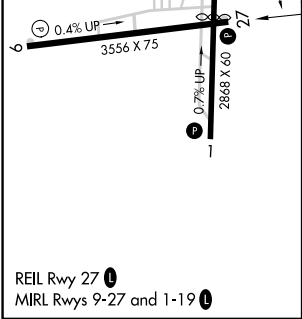
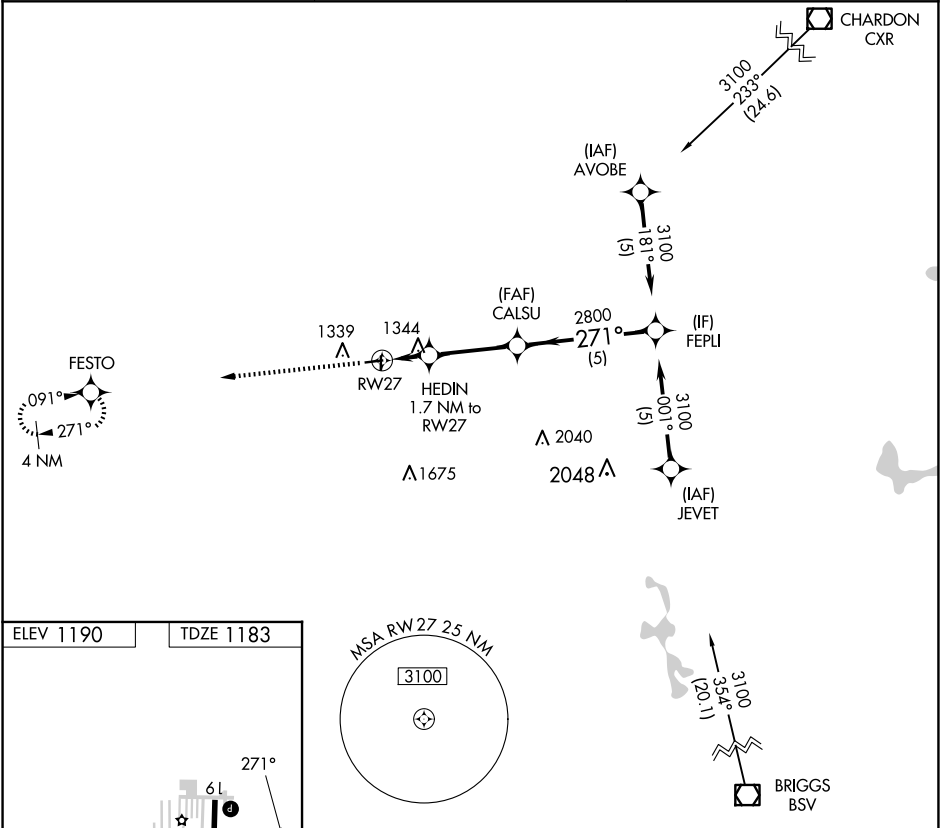
APP CRS	Rwy Idg	3556
271°	TDZE	1183
	Apt Elev	1190

RNAV (GPS) RWY 27

MEDINA MUNI (1G5)

RNP APCH.	MISSED APPROACH: Climb to 2800 direct FESTO and hold.
NA	Rwy 27 helicopter visibility reduction below 3/4 SM NA. Use Cleveland-Hopkins Intl altimeter setting.

CLE ASOS 127.85	CLEVELAND APP CON 125.35 346.325	UNICOM 123.0 (CTAF) 0
--------------------	-------------------------------------	--------------------------



<div><div>2800</div><div>↑</div></div> <div><div>FESTO</div><div></div></div> <div>Visual Segment - Obstacles.</div> <div><div>FEPLI</div><div>3100</div></div>													
<div><div><div>RW27</div><div></div></div><div><div>HEDIN</div><div>1.7 NM to RW27</div></div><div><div>CALSU</div><div></div><div>2800</div></div><div><div>271°</div></div></div> <tr><td colspan="2"><div>1760</div><div>5 NM</div></td></tr> <tr><td>CATEGORY</td><td>A</td><td>B</td><td>C</td><td>D</td></tr> <tr><td>LNAV MDA</td><td>1700-1</td><td>517 (600-1)</td><td>1700-1½ 517 (600-1½)</td><td>NA</td></tr>		<div>1760</div> <div>5 NM</div>		CATEGORY	A	B	C	D	LNAV MDA	1700-1	517 (600-1)	1700-1½ 517 (600-1½)	NA
<div>1760</div> <div>5 NM</div>													
CATEGORY	A	B	C	D									
LNAV MDA	1700-1	517 (600-1)	1700-1½ 517 (600-1½)	NA									

EC-2, 10 JUL 2025 to 07 AUG 2025

EC-2, 10 JUL 2025 to 07 AUG 2025