

HARLAN, IOWA

AL-5762 (FAA)

25163

APP CRS
330°

Rwy Ldg	4100
TDZE	1215
Apt Elev	1231

GPS RWY 33
HARLAN MUNI (HNR)



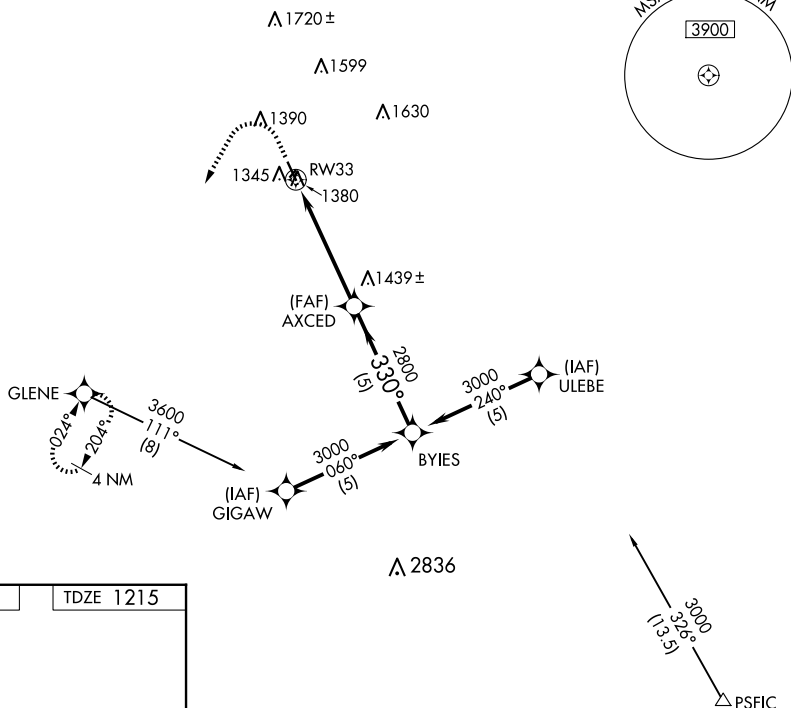
ANA

Procedure NA at night. Helicopter visibility reduction below 1 SM NA. Circling NA to Rwy 3 and 21.

MISSED APPROACH: Climb to 2000, then climbing left turn to 3600 direct GLENE and hold.

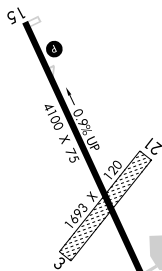
AWOS-3
118.325

OMAHA APP CON
124.5 263.0

UNICOM
122.8 (CTAF) **L**

ELEV 1231

TDZE 1215



REIL Rwy 15 and 33 **L**
MIRL Rwy 15-33 **L**

Diagram illustrating a procedure turn NA. The diagram shows a flight path starting from the left, passing through a 2000 frequency box, a 3600 frequency box, and a GLENE station box. The path then turns right at a 330-degree angle, passing through an AXCED station box. The path continues to a BYIES station box, where a procedure turn NA is indicated. The distance from the start to the first turn is 5 NM, and the distance from the first turn to the BYIES station is 5 NM. The altitude at the first turn is 2800 feet, and the altitude at the BYIES station is 3000 feet. The diagram also shows a 2.96-degree angle and a TCH 34 (touchdown height) of 34 feet.

HARLAN, IOWA
Orig-C 16AUG18

41°35'N-95°20'W

HARLAN MUNI (HNR)
GPS RWY 33

NC-3, 10 JUL 2025 to 07 AUG 2025

NC-3, 10 JUL 2025 to 07 AUG 2025