

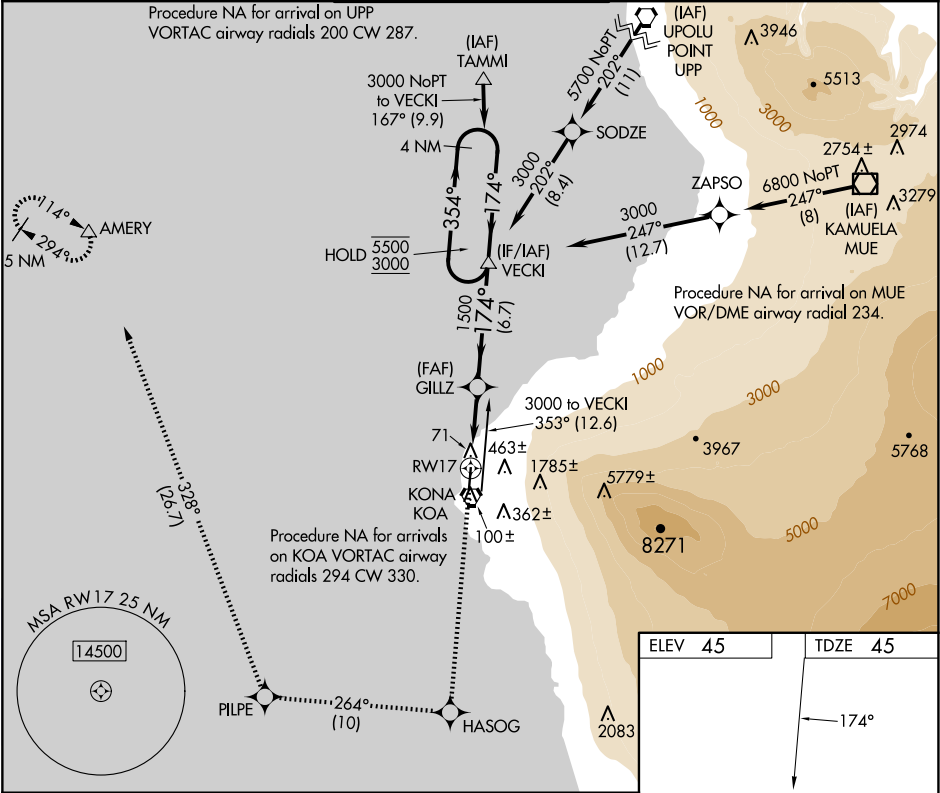
APP CRS	Rwy Ldg	7000
174°	TDZE	45
	Apt Elev	45

RNAV (GPS) Y RWY 17  
ELLISON ONIZUKA KONA INTL AT KEAHOLE (KOA) (PHKO)

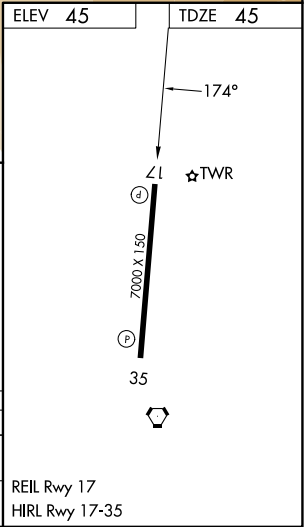
RNP APCH - GPS.
Circling NA east of Rwy 17-35.

MISSED APPROACH: Climb to 5000 direct HASOG and on 264° track to PILPE and on 328° track to AMERY and hold.

ATIS 127.4	HCF CENTER 118.45 278.3	KONA TOWER★ 120.3 (CTAF) 254.3	GND CON 121.9	CLNC DEL 118.6
---------------	----------------------------	-----------------------------------	------------------	-------------------



5000	HASOG	tr 264°	PILPE	tr 328°	AMERY
CATEGORY	A	B	C	D	
LNAV MDA	640-1/2	595 (600-1/2)	640-1 1/4	595 (600-1 1/4)	
CIRCLING	640-1	595 (600-1)	640-1 3/4	640-2	
			595 (600-1 3/4)	595 (600-2)	



PAC, 12 JUN 2025 to 07 AUG 2025

PAC, 12 JUN 2025 to 07 AUG 2025