

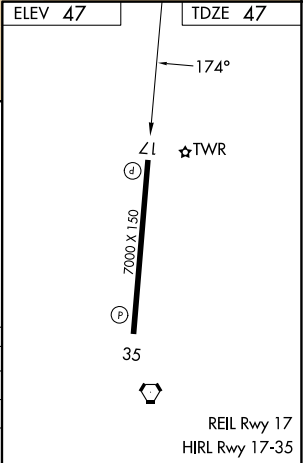
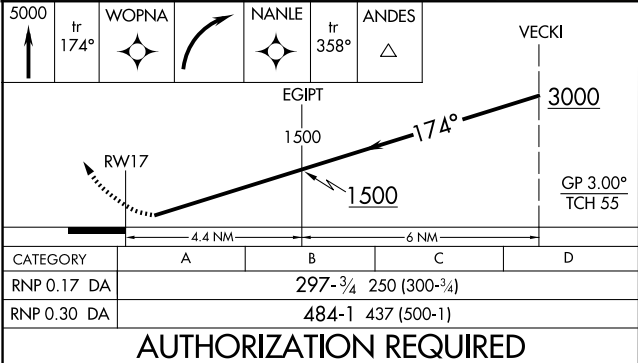
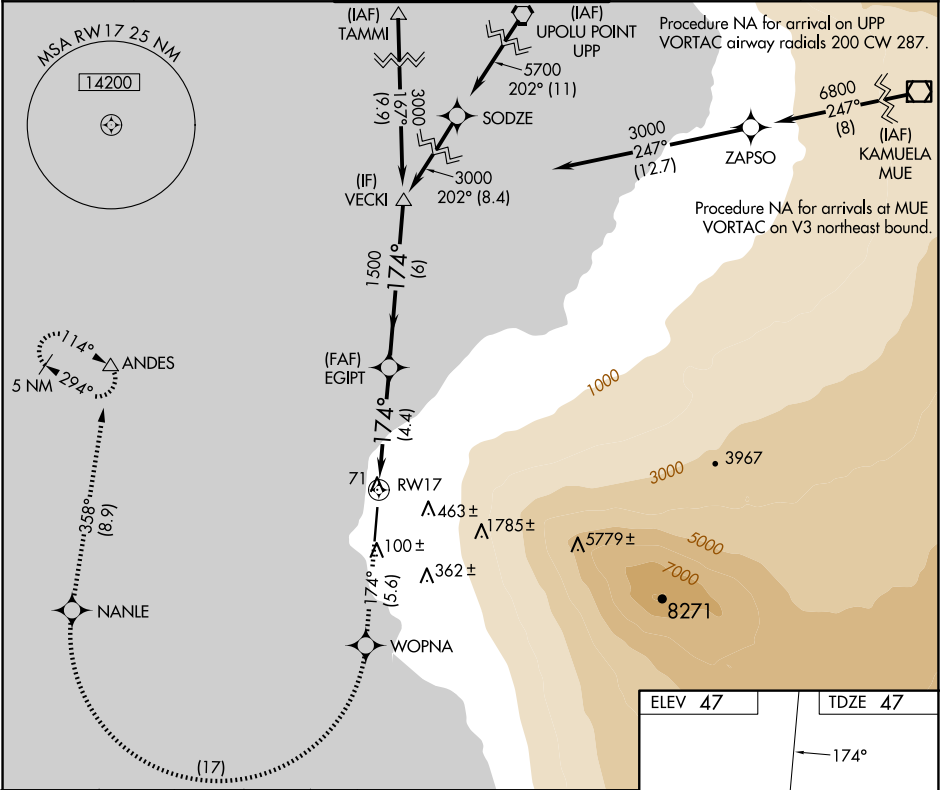
APP CRS	Rwy Ldg	7000
174°	TDZE	47
	Apt Elev	47

RNAV (RNP) Z RWY 17

ELLISON ONIZUKA KONA INTL AT KEAHOLE (KOA) (PHKO)

<div><div>▼</div><div>For uncompensated Baro-VNAV systems, procedure NA below 6°C (43°F) or above 48°C (119°F). RF required. GPs required. For inop ALS, increase RNP 0.30 all Cats visibility to 1½ mile.</div></div> <div><div>MISSED APPROACH:</div><div>Climb to 5000 on track 174° to WOPNA and right turn to NANLE, and on track 358° to ANDES and hold.</div></div>
--

ATIS 127.4	HCF CENTER 118.45 278.3	KONA TOWER ★ 120.3 (CTAF) 254.3	GND CON 121.9	CLNC DEL 118.6
---------------	----------------------------	------------------------------------	------------------	-------------------



PAC, 12 JUN 2025 to 07 AUG 2025

PAC, 12 JUN 2025 to 07 AUG 2025