

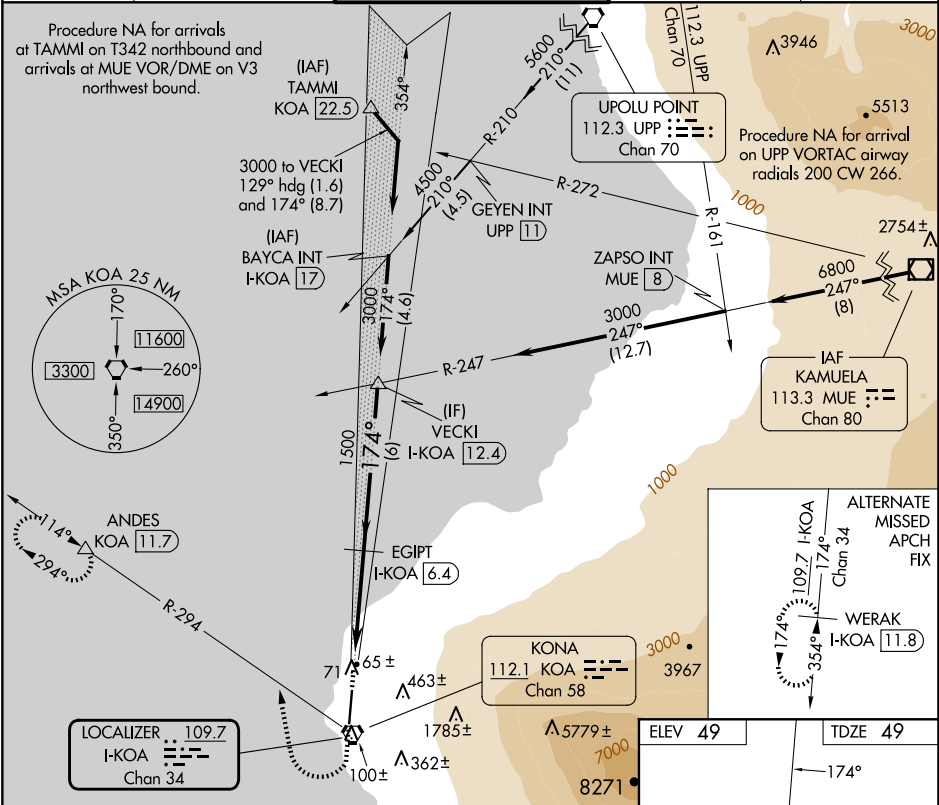
LOC/DME I-KOA	APP CRS	Rwy Ldg	7000
<b>109.7</b>	<b>174°</b>	TDZE	<b>49</b>
Chan 34		Apt Elev	<b>49</b>

ILS or LOC RWY 17

ELLISON ONIZUKA KONA INTL AT KEAHOLE (KOA)(PHKO)

DME required.	MISSED APPROACH: Climb to 460 then climbing right turn to 5000 on KOA VORTAC R-294 to ANDES/KOA VORTAC 11.7 DME and hold, continue climb-in-hold to 5000.
Autopilot coupled approach NA below 500. Circling NA east of Rwy 17-35. For inop ALS, increase S-ILS 17 Cat E visibility to ¾ SM and S-LOC 17 Cats C, D, E visibility to 1 SM.	

ATIS	HCF CENTER	KONA TOWER ★	GND CON	CLNC DEL
<b>127.4</b>	<b>118.45 278.3</b>	<b>120.3(CTAF) 254.3</b>	<b>121.9</b>	<b>118.6</b>



460 ↑	5000 ↷ KOA R-294	ANDES △	VGS1 and ILS glidepath not coincident (VGS1 Angle 3.00°/TCH 60).		VECKI I-KOA [12.4]
Use I-KOA DME when on the localizer course.			Egypt I-KOA [6.4]	1500	3000
I-KOA [2]			I-KOA [2.9]	1500	GS 3.00° TCH 55
0.9			3.5 NM	6 NM	
CATEGORY	A	B	C	D	E
S-ILS 17	249-½ 200 (200-½)				
S-LOC 17	400-½	351 (400-½)	400-⅝ 351 (400-⅝)		
CIRCLING	520-1	471 (500-1)	520-1½ 471 (500-1½)	600-2 551 (600-2)	

