

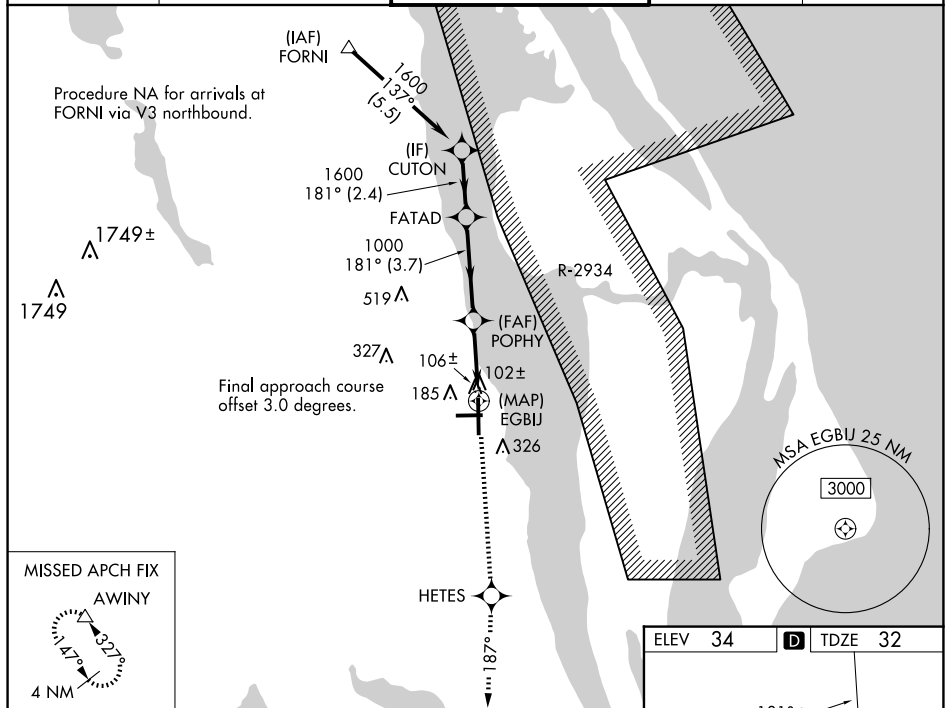
WAAS CH <b>56612</b> <b>W18B</b>	APP CRS <b>181°</b>	Rwy Idg <b>6930</b> TDZE <b>32</b> Apt Elev <b>34</b>
--	------------------------	---

RNAV (GPS) Z RWY 18  
SPACE COAST RGNL (TIX)

**T** Baro-VNAV NA when using Melbourne altimeter setting. For uncompensated Baro-VNAV systems, LNAV/VNAV NA below -15°C (5°F) or above 47°C (116°F). DME/DME RNP-0.3 NA. Visibility reduction by helicopters NA. When control tower closed, use Melbourne altimeter setting.

MISSED APPROACH: Climb to 3000 direct HETES and via track 187° to AWINY and hold.

ATIS <b>120.625</b>	ORLANDO APP CON <b>134.95 281.425</b>	SPACE COAST TOWER ★ <b>118.9 (CTAF) 0</b>	GND CON <b>121.85</b>	UNICOM <b>122.95</b>
------------------------	--	--	--------------------------	-------------------------



<p>VGSI and RNAV glidepath not coincident (VGSI Angle 3.00/TCH 44).</p>				<p>3000 ↑</p>	<p>HETES ✦</p>	<p>tr 187°</p>	<p>AWINY △</p>
<p>Procedure Turn NA</p>	<p>CUTON</p>	<p>FATAD</p>					
<p>GP 3.00° TCH 50</p>	<p>1600</p>	<p>1600</p>	<p>1000</p>	<p>POPHY</p>	<p>EGBUJ</p>		
		<p>2.4 NM</p>	<p>3.7 NM</p>	<p>2.9 NM</p>			
CATEGORY	A	B	C	D			
LPV DA	332-1 300 (300-1)						
RNAV/ VNAV DA	377-1¼ 345 (400-1¼)						
MELBOURNE ALTIMETER SETTING MINIMUMS							
RNAV/ VNAV DA	437-1½ 405 (500-1½)						

