

WAAS CH <b>86536</b> <b>W09A</b>	APP CRS <b>094°</b>	Rwy Idg TDZE <b>32</b> Apt Elev <b>34</b>	<b>5000</b>
--	------------------------	---	-------------

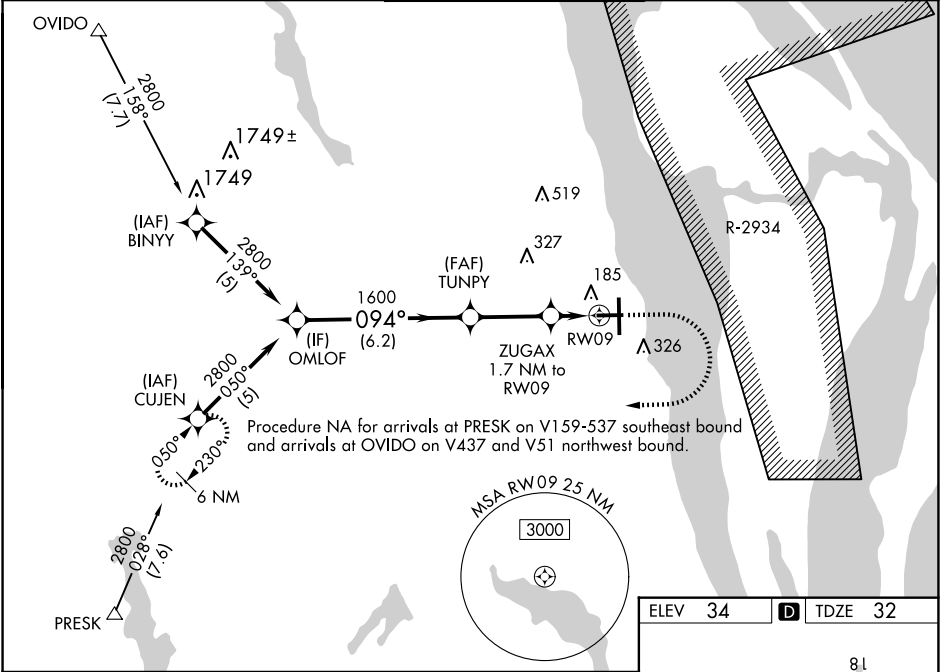
RNAV (GPS) RWY 9

SPACE COAST RGNL (TIX)

DME/DME RNP-0.3 NA. For uncompensated Baro-VNAV systems, LNAV/VNAV NA below -15°C (5°F) or above 46°C (115°F). When local altimeter setting not received, use Melbourne altimeter setting and increase all LPV DA to 352 feet, increase all LNAV/VNAV DA to 407 feet and all visibilities ¼ SM; increase all LNAV MDAs 60 feet and Cat C and D visibility ¼ SM. Rwy 9 helicopter visibility reduction below ¼ SM NA. VDP and Baro-VNAV NA when using Melbourne altimeter setting.

MISSED APPROACH: Climb to 800 then climbing right turn to 2800 direct CUJEN and hold.

ATIS <b>120.625</b>	ORLANDO APP CON <b>134.95 281.425</b>	SPACE COAST TOWER ★ <b>118.9 (CTAF) 0</b>	GND CON <b>121.85</b>	UNICOM <b>122.95</b>
------------------------	--	--	--------------------------	-------------------------



VGSI and RNAV glidepath not coincident (VGSI Angle 3.00/TCH 42).

800

2800

CUJEN

OMLOF

TUNPY

ZUGAX

2800

094°

1600

\* 640

\* 1.1 NM to RW09

\* 1.7 NM to RW09

\* LNAV only

GP 3.10°

TCH 60

6.2 NM

2.9 NM

0.6 NM

1.1 NM

CATEGORY	A	B	C	D
LPV DA		292-1	260 (300-1)	
LNAV/VNAV DA		347-1	315 (400-1)	
LNAV MDA	420-1	388 (400-1)	420-1 ⅛	388 (400-1 ⅛)
CIRCLING	640-1	606 (700-1)	640-1 ¾	640-2

5000 X 100

094° to RW09

8.1

7319 X 150

27

TWR 98

97

36

MIRL Rwy 9-27

HIRL Rwy 18-36

REIL Rlys 9, 18, 27