

WAAS CH 77635 W32A	APP CRS 318°	Rwy Idg 4650 TDZE 1204 Apt Elev 1204
--	------------------------	---

RNAV (GPS) RWY 32

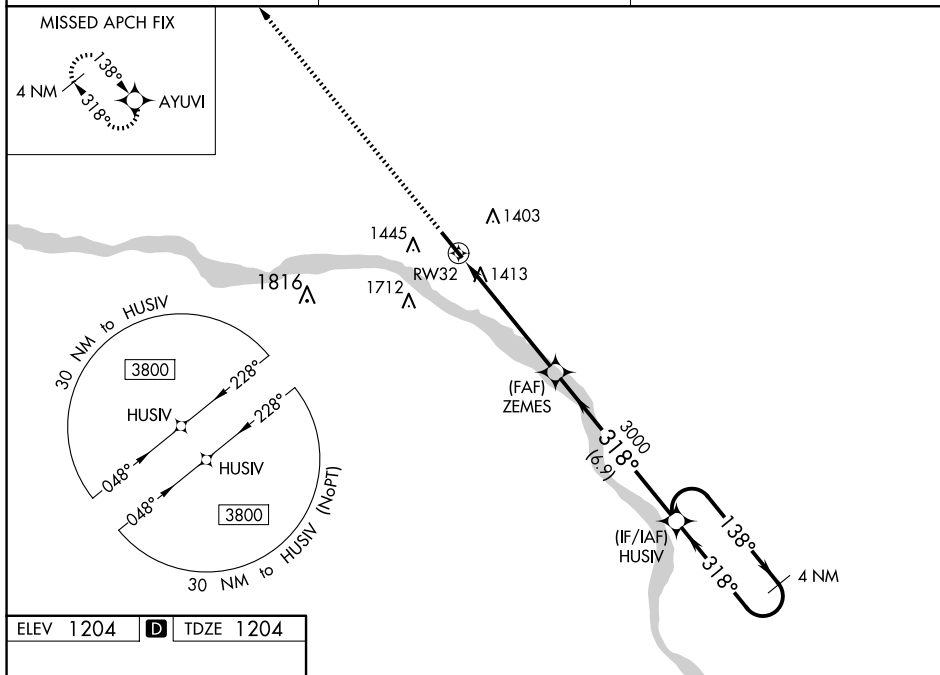
FREMONT MUNI (FET)

⚠ For uncompensated Baro-VNAV systems, LNAV/VNAV NA below -17°C (2°F) or above 54°C (130°F).
⚠ DME/DME RNP-0.3 NA. Helicopter visibility reduction below 1 SM NA. When local altimeter setting not received, use Blair altimeter setting and increase all DA/MDA 60 feet; increase LNAV Cat C visibility ½ mile, and LNAV/VNAV visibility ¼ mile all Cats. Baro-VNAV and VDP NA when using Blair altimeter setting.

MISSED APPROACH:
Climb to 3300 direct
AYUVI and hold.

AWOS-3 121.275	OMAHA APP CON 135.875 354.05	UNICOM 122.8 (CTAF) 0
--------------------------	--	---------------------------------

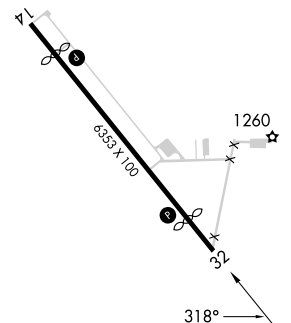
MISSED APCH FIX



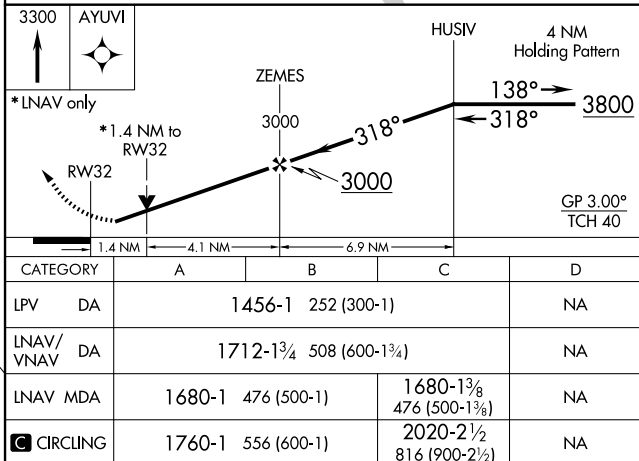
ELEV 1204	D	TDZE 1204
-----------	----------	-----------

□

TDZE 1204

REIL Rwy 14 

MIRL Rwy 14-32



FREMONT, NEBRASKA

Orig-B 29MAR18

FREMONT MUNI (FET)

RNAV (GPS) RWY 32

41°27'N-96°31'W

NC-2, 10 JUL 2025 to 07 AUG 2025