

WAAS CH 82403 W14A	APP CRS 138°	Rwy Idg TDZE Apt Elev	4650 1204 1204
--	------------------------	-----------------------------	---

RNAV (GPS) RWY 14

FREMONT MUNI (F'ET)

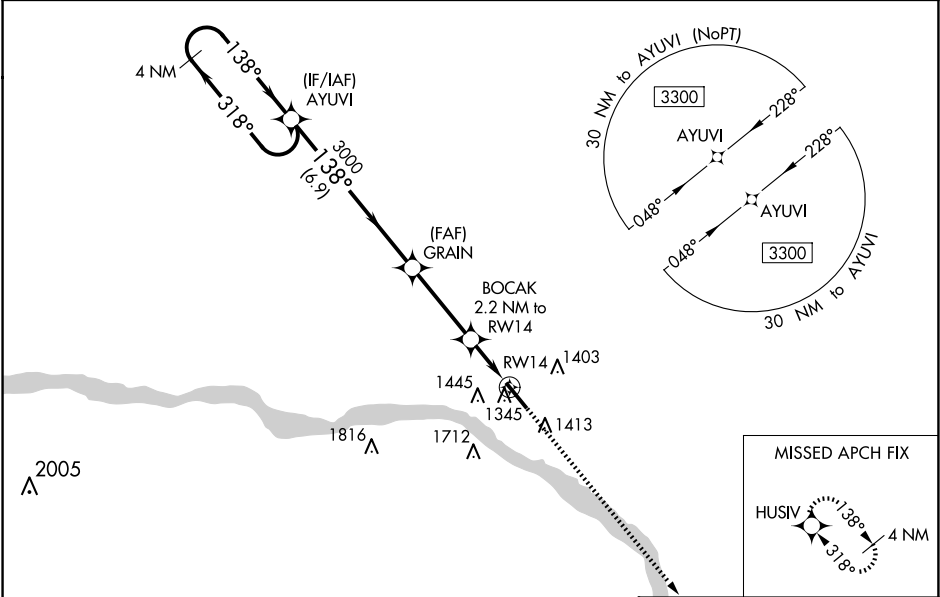
▼

▲

For uncompensated Baro-VNAV systems, LNAV/VNAV NA below -17°C (2°F) or above 54°C (130°F). DME/DME RNP-0.3 NA. Helicopter visibility reduction below 1 SM NA. When local altimeter setting not received, use Blair altimeter setting and increase all DA/MDA 60 feet; increase LNAV/VNAV all Cats visibility 1⁄8 mile, and LNAV Cat C visibility 1⁄4 mile. Baro-VNAV and VDP NA when using Blair altimeter setting.

MISSED APPROACH:
Climb to 3800 direct HUSIV and hold.

AWOS-3 121.275	OMAHA APP CON 135.875 354.05	UNICOM 122.8 (CTAF) 0
--------------------------	--	---------------------------------



ELEV 1204

D

TDZE 1204

4 NM Holding Pattern	AYUVI	GRAIN	BOCAK 2.2 NM to RW14	HUSIV
3300	3000	3000	*1.1 NM to RW14	*LNAV only
GP 3.00° TCH 40	6.9 NM	3.3 NM	1.1 NM	RW14
CATEGORY	A	B	C	D
LPV DA	1454-1	250 (300-1)		NA
LNAV/ VNAV DA	1496-1	292 (300-1)		NA
LNAV MDA	1600-1	396 (400-1)	1600-1 1⁄8 396 (400-1 1⁄8)	NA
CIRCLING	1760-1	556 (600-1)	2020-2 1⁄2 816 (900-2 1⁄2)	NA

REIL Rwy 14 0

MIRL Rwy 14-32

NC-2, 10 JUL 2025 to 07 AUG 2025

NC-2, 10 JUL 2025 to 07 AUG 2025