

APP CRS  
**216°**

Rwy Idg  
**5004**

TDZE  
**717**

Apt Elev  
**717**

**RNAV (GPS) RWY 22**

SHARP COUNTY RGNL (CVK)

RNP APCH.

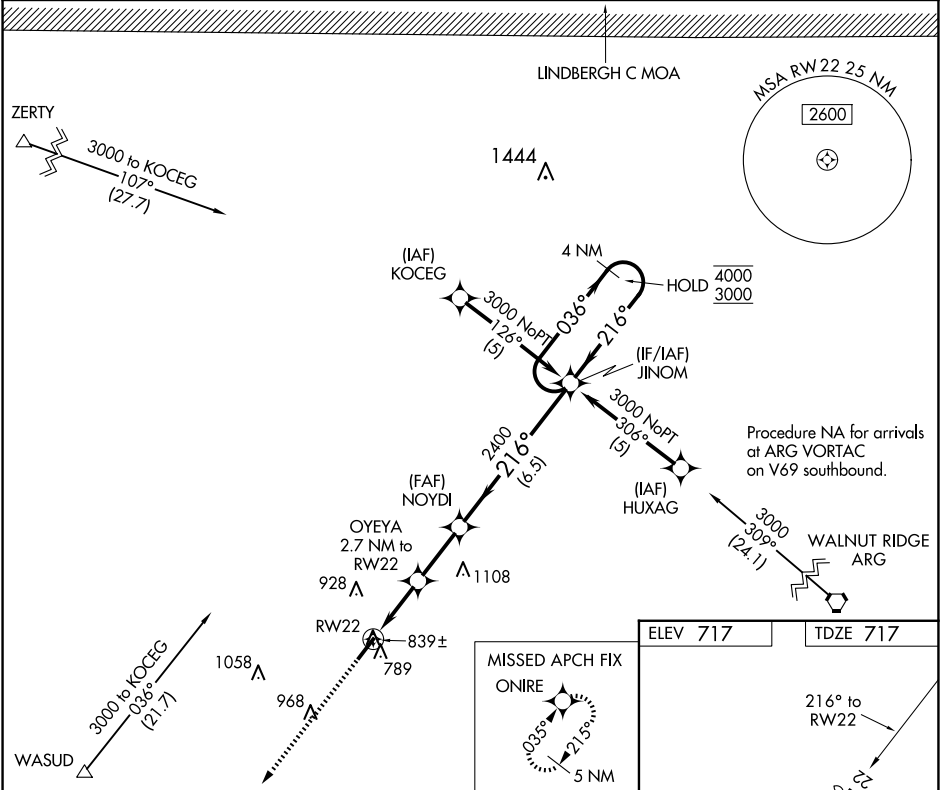
T

NA

Rwy 22 helicopter visibility reduction below ¾ SM NA. Circling Rwy 4 NA at night. Use Walnut Ridge Rgnl altimeter setting; when not received, use Jonesboro Municipal altimeter setting and increase all MDAs 60 feet, increase LNAV Cat C visibility ½ SM and Circling Cat C visibility ¼ SM.

MISSED APPROACH: Climb to 3000 direct ONIRE and hold.

ARG AWOS-3PT <b>126.525</b>	MEMPHIS CENTER <b>120.075 289.4</b>	UNICOM <b>122.7 (CTAF) 0</b>
--------------------------------	--	---------------------------------



3000	ONIRE	VGSI and RNAV glidepath not coincident (VGSI Angle 3.00/TCH40).			
RWY22		OYEYA 2.7 NM to RWY22	NOYDI	JINOM	4 NM Holding Pattern
		3.04° TCH 40	216°	036°	4000 3000
		1600	2400		
		2.7 NM	2.4 NM	6.5 NM	
CATEGORY	A	B	C	D	
LNAV MDA	1360-1	643 (700-1)	1360-1 7/8 643 (700-1 7/8)	NA	
CIRCLING	1400-1	683 (700-1)	1420-2 703 (800-2)	NA	

MIRL Rwy 4-22 0