

BAYTOWN, TEXAS

AL-5757 (FAA)

22223

APP CRS	Rwy Idg	3283
320°	TDZE	28
	Apt Elev	34

RNAV (GPS) RWY 32
BAYTOWN (HPY)

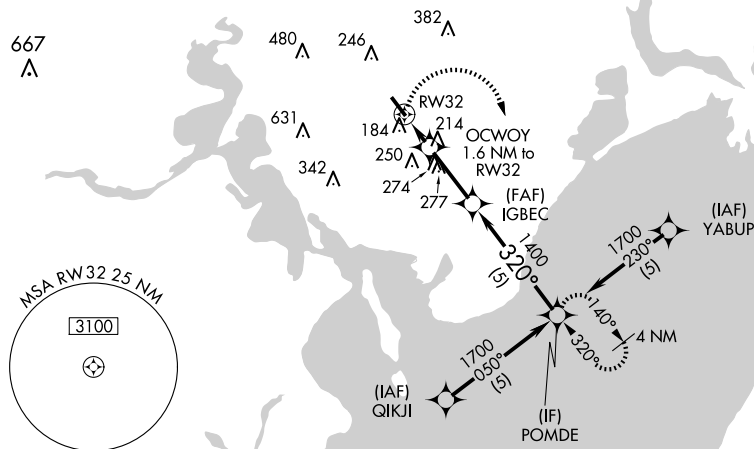
RNP APCH-GPS.

T Circling NA at night. Rwy14 helicopter visibility reduction below
A NA 1 SM NA. Obtain local altimeter setting on CTAF; when not received,
 use William P Hobby altimeter setting and increase all MDA 60 feet.

MISSED APPROACH:
Climbing right turn to 2000
direct to POMDE and hold.

HOUSTON APP CON
134.45 281.4

UNICOM
122.8 (CTAF) **L**



ELEV 34	D	TDZE 28
---------	----------	---------

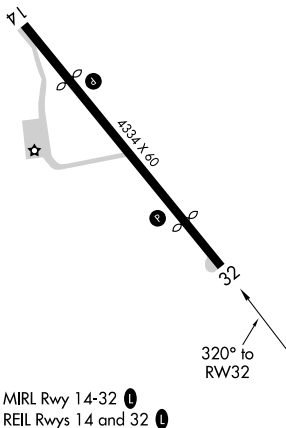


Diagram illustrating a flight path with a 320° turn and a 3.37° TCH 40 approach. The path starts at a 2000 altitude, turns 320° to a 1700 altitude, and then descends to a 640 altitude. The distance from the start of the descent to the 640 altitude is 1.6 NM. The distance from the 640 altitude to the 1700 altitude is 2.5 NM. The distance from the 1700 altitude to the end of the path is 5 NM. The diagram also shows a 3.37° TCH 40 approach and a 320° turn. The diagram includes a legend for symbols: 2000, POMDE, VGSI and descent angles not coincident (VGSI Angle 3.00/TCH 20), RW32, OLCWOY 1.6 NM to RW32, IGBEC, 1400, 320°, 1700, 640, 3.37°, TCH 40, 1.6 NM, 2.5 NM, 5 NM.

CATEGORY	A	B	C	D
LNAV MDA	520-1	492 (500-1)	NA	
CIRCLING	520-1 486 (500-1)	560-1 526 (600-1)	NA	

BAYTOWN, TEXAS
Orig-B 11AUG22

29°47'N-94°57'W

BAYTOWN (HPY)
RNAV (GPS) RWY 32

SC-5, 10 JUL 2025 to 07 AUG 2025

SC-5, 10 JUL 2025 to 07 AUG 2025