

SC-5, 10 JUL 2025 to 07 AUG 2025

HOUSTON DEP CON
134.45 284.0
CTAF
122.8

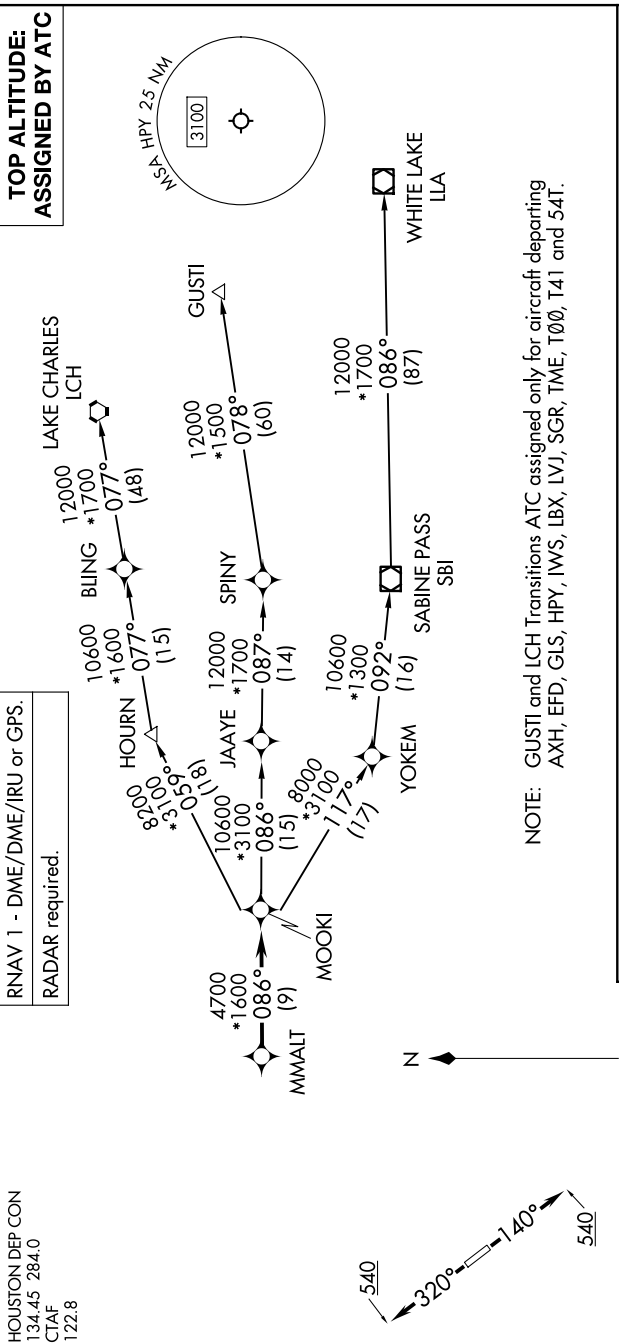
RNAV 1 - DME/DME/IRU or GPS.
RADAR required.

(MMALT7.MMALT) 23334

MMALT SEVEN DEPARTURE (RNAV)

AL-5757 (FAA)

BAYTOWN (HPY)
BAYTOWN, TEXAS



DEPARTURE ROUTE DESCRIPTION

TAKEOFF MINIMUMS
Rwys 14, 32: Standard with minimum
climb of 500' /NM to 540.

TAKEOFF RUNWAY 14: Climb on heading 140° to 540, for RADAR vectors to MMALT, thence. . .
TAKEOFF RUNWAY 32: Climb on heading 320° to 540, for RADAR vectors to MMALT, thence. . .
... on track 086° to MOOKI, then on (transition). Maintain ATC assigned altitude.
Expect filed altitude 10 minutes after departure.

GUSTI TRANSITION (MMALT7.GUSTI)
LAKE CHARLES TRANSITION (MMALT7.LCH)
WHITE LAKE TRANSITION (MMALT7.LLA)

NOTE: Chart not to scale.

MMALT SEVEN DEPARTURE (RNAV)

(MMALT7.MMALT) 30NOV23

BAYTOWN, TEXAS
BAYTOWN (HPY)

SC-5, 10 JUL 2025 to 07 AUG 2025