

WAAS CH <b>49135</b> <b>W04A</b>	APP CRS <b>040°</b>	Rwy Idg TDZE <b>181</b> Apt Elev <b>182</b>	<b>5002</b>
--	------------------------	---	-------------

RNAV (GPS) RWY 4

DEXTER B FLORENCE MEML FLD (ADF')

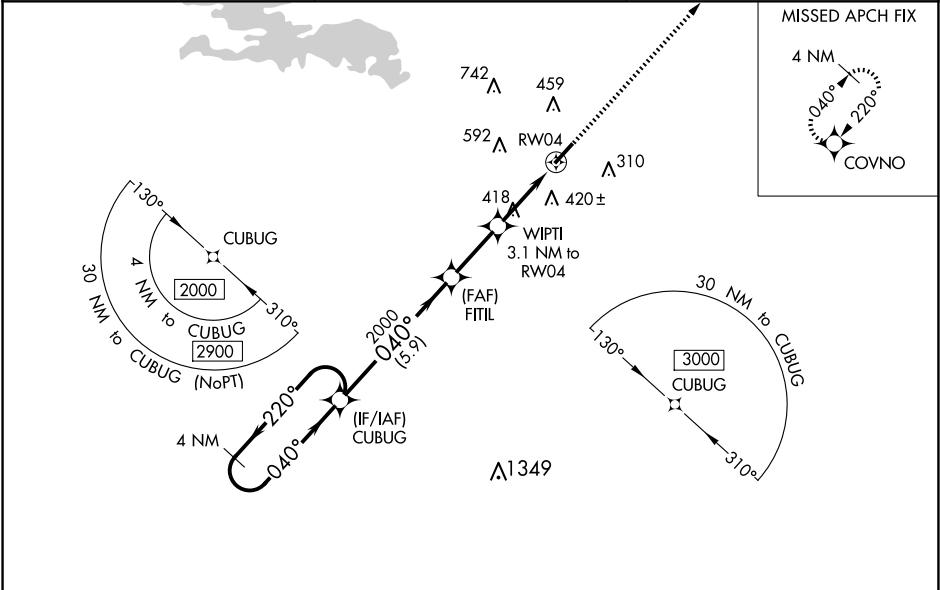
▼

NA

DME/DME RNP-0.3 NA. When local alimeter setting not received use Hot Springs altimeter setting and increase all DA 103 feet and MDA 120 feet and increase LPV all Cats visibility ⅓ mile and LNAV/VNAV all Cats visibility and Circling Cat C visibility ½ mile.  
For uncompensated Baro-VNAV systems, LNAV/VNAV NA below -15°C (5°F) or above 54°C (130°F). Baro-VNAV NA when using Hot Springs altimeter setting. Helicopter visibility reduction below ¾ SM NA. Night landing: Rwy 22 NA.

MISSED APPROACH:  
Climb to 2100 direct COVNO and hold.

AWOS-3PT <b>118.175</b>	MEMPHIS CENTER <b>128.475 377.15</b>	UNICOM <b>122.7 (CTAF)</b>
----------------------------	---	-------------------------------



ELEV 182

TDZE 181

VGSI and RNAV glidepath not coincident (VGSI Angle 3.00/TCH 23).

4 NM Holding Pattern

CUBUG

FITIL

WIPTI 3.1 NM to RWY 04

RWY 04

2100

COVNO

\*LNNAV only.

GP 3.00° TCH 45

5.9 NM

2.5 NM

3.1 NM

CATEGORY	A	B	C	D
LPV DA	431-1	250 (300-1)		NA
LNAV/VNAV DA	669-1 5/8	488 (500-1 3/8)		NA
LNAV MDA	680-1	499 (500-1)	680-1 3/8 499 (500-1 3/8)	NA
CIRCLING	760-1 578 (600-1)	800-1 618 (700-1)	1040-2 1/2 858 (900-2 1/2)	NA

MIRL Rwy 4-22

REIL Rwy 4 and 22