

WAAS CH <b>93835</b> <b>W22A</b>	APP CRS <b>220°</b>	Rwy Idg TDZE <b>182</b> Apt Elev <b>182</b>
--	------------------------	---

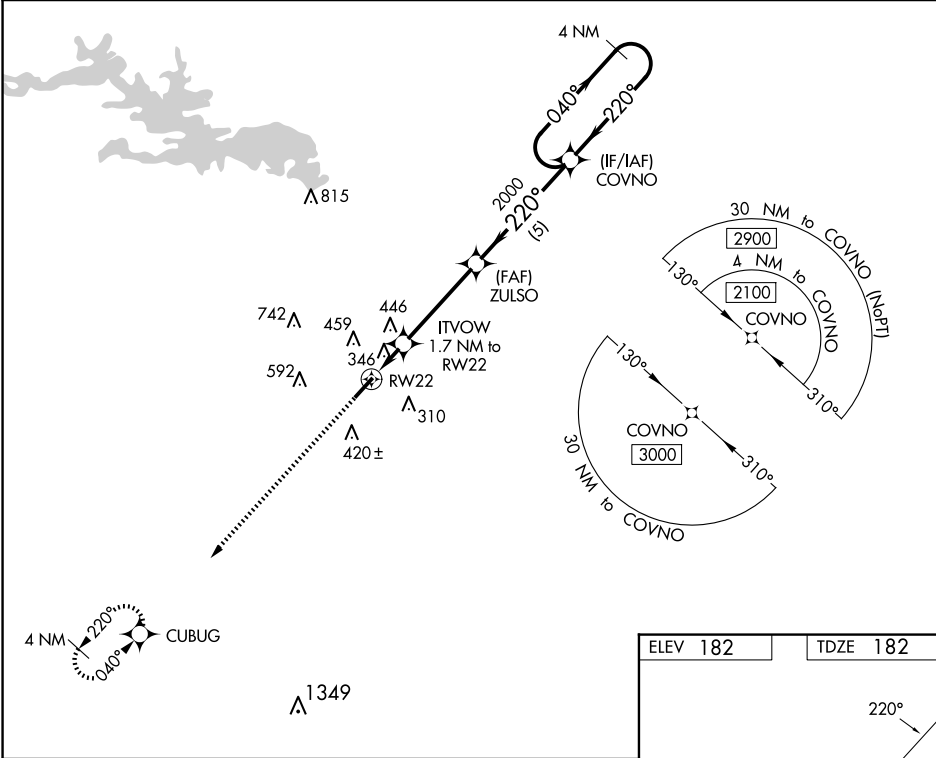
RNAV (GPS) RWY 22  
DEXTER B FLORENCE MEML FLD (ADF')

**▽** DME/DME RNP-0.3 NA. When local altimeter setting not received, use Hot Springs altimeter setting and increase all MDAs 120 feet, and increase LP and LNAV Cat C visibility  $\frac{3}{8}$  SM and Circling Cat C visibility  $\frac{1}{2}$  mile. Night landing: Rwy 22 NA. Helicopter visibility reduction below 1 SM NA.

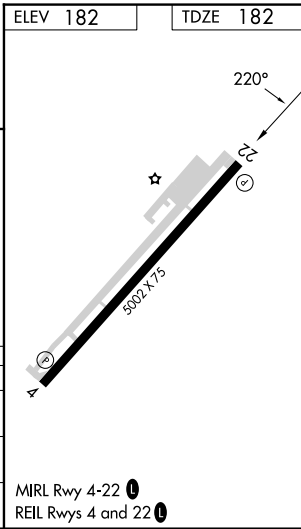
**△ NA**

MISSED APPROACH: Climb to 2000 direct CUBUG and hold.

AWOS-3PT <b>118.175</b>	MEMPHIS CENTER <b>128.475 377.15</b>	UNICOM <b>122.7 (CTAF) 0</b>
----------------------------	---	---------------------------------



2000	CUBUG	Visual Segment - Obstacles.				4 NM Holding Pattern
		ITVOW 1.7 NM to RW22	ZULSO	COVNO	2100	
		RW22	760	2000	040°	220°
		1.7	3.9 NM	5 NM		
CATEGORY	A	B	C	D		
LP MDA	600-1	418 (500-1)	600-1 $\frac{3}{8}$ 418 (500-1 $\frac{3}{8}$ )	NA		
LNAV MDA	680-1	498 (500-1)	680-1 $\frac{3}{8}$ 498 (500-1 $\frac{3}{8}$ )	NA		
CIRCLING	760-1 578 (600-1)	800-1 618 (700-1)	1040-2 $\frac{1}{2}$ 858 (900-2 $\frac{1}{2}$ )	NA		



SC-1, 10 JUL 2025 to 07 AUG 2025

SC-1, 10 JUL 2025 to 07 AUG 2025