

MANKATO, MINNESOTA

AL-5755 (FAA)

23334

WAAS CH <b>45615</b> <b>W15A</b>	APP CRS <b>155°</b>	Rwy Idg <b>6600</b> TDZE <b>1020</b> Apt Elev <b>1021</b>
--	------------------------	---

# RNAV (GPS) RWY 15

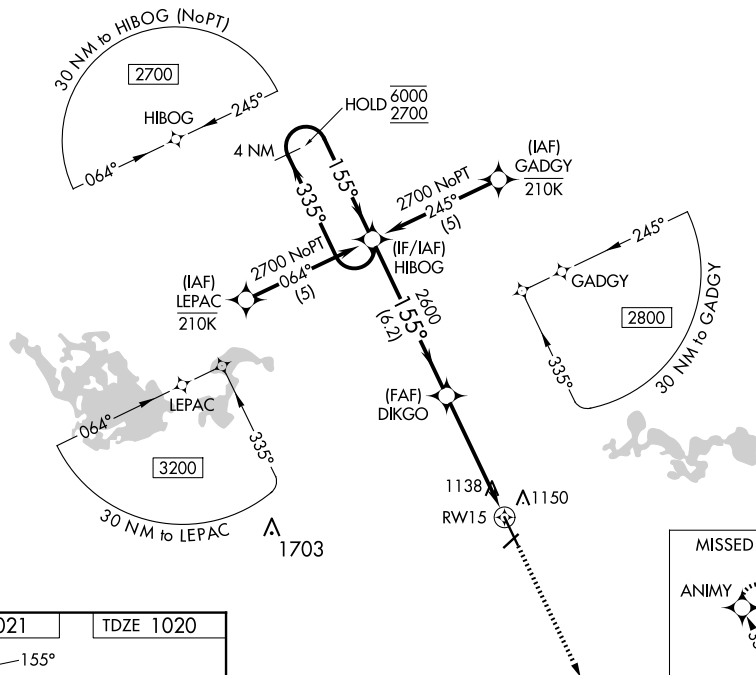
## MANKATO RGNL (MKT)

RNP APCH - GPS.

**T** For uncompensated Baro-VNAV systems, LNAV/VNAV NA below -17°C  
**A** or above 54°C. Rwy 15 helicopter visibility reduction below 1 SM NA.

MISSED APPROACH: Climb to 2900 direct ANIMY and hold.

AWOS-3PT <b>118,175</b>	MINNEAPOLIS CENTER <b>135.0 306.9</b>	UNICOM <b>122.725 (CTAF) ①</b>
----------------------------	--	-----------------------------------

[illegible]

MANKATO, MINNESOTA  
Amdt 1 30NOV23

44°13'N-93°55'W

MANKATO RGNL (MKT)  
RNAV (GPS) RWY 15

NC-1, 10 JUL 2025 to 07 AUG 2025

NC-1, 10 JUL 2025 to 07 AUG 2025