

RNAV (GPS) RWY 15

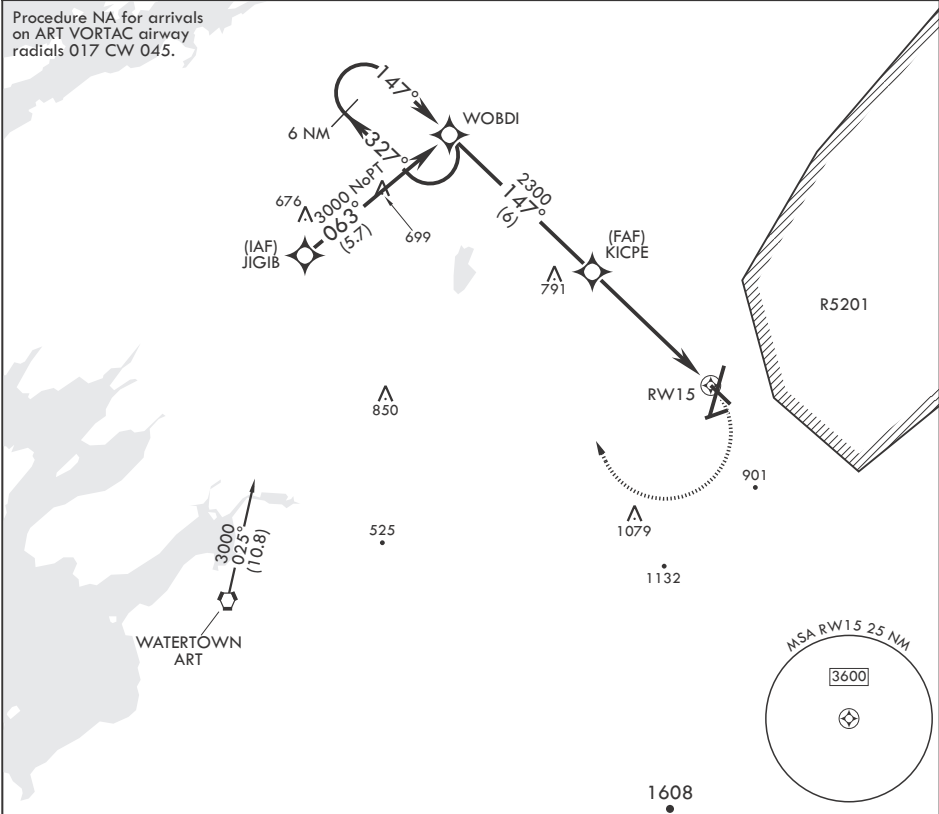
APCH CRS	Rwy Idg	5002
147°	TDZE	687
	Arprt Elev	690

-(USA)

WHEELER SACK AAF (KGTB)

RNP APCH - GPS	MALSR	MISSED APPROACH: Climbing right turn to 3000 direct WOBDI and hold.
* When ALS inop, increase CAT AB vis to 1 mile; CAT CD vis to 1 3/8 miles. ** Circling NA E of Rwy 21 and 33. Circling NA for CAT BCD to Rwy 8.		

ATIS 119.525	APP CON/DEP CON 124.875 307.125	TOWER 118.75 290.25	GND CON 123.65 229.8	CLNC DEL 123.65	ASR/PAR
-----------------	------------------------------------	------------------------	-------------------------	--------------------	---------



6 NM Holding Pattern

3000

327°

147°

WOBDI

147°

KICPE

2300

1.4 NM to RWY 15

5 NM

RWY 15

3.00° ≥ TCH 40

3000

WOBDI

ELEV 690

Rwy 3 Idg 8637'

147°

10000 x 150

0.53 x 144

900

BCN 876

4501 x 150

TWR 763

HIRL Rwy 3-21, 15-33

MIRL Rwy 8-26

RAIL Rwy 15

CATEGORY	A	B	C	D
LNAV MDA*	1200-¾ 513 (600-¾)	1240-1 513 (600-1)	1200-1 513 (600-1)	1280-1½ 1460-2½ (800-2½)
CIRCLING**	1200-1 510 (600-1)	1240-1 550 (600-1)	1280-1½ 590 (600-1½)	1460-2½ 770 (800-2½)

RNAV (GPS) RWY 15

NE-2, 10 JUL 2025 to 07 AUG 2025

NE-2, 10 JUL 2025 to 07 AUG 2025