

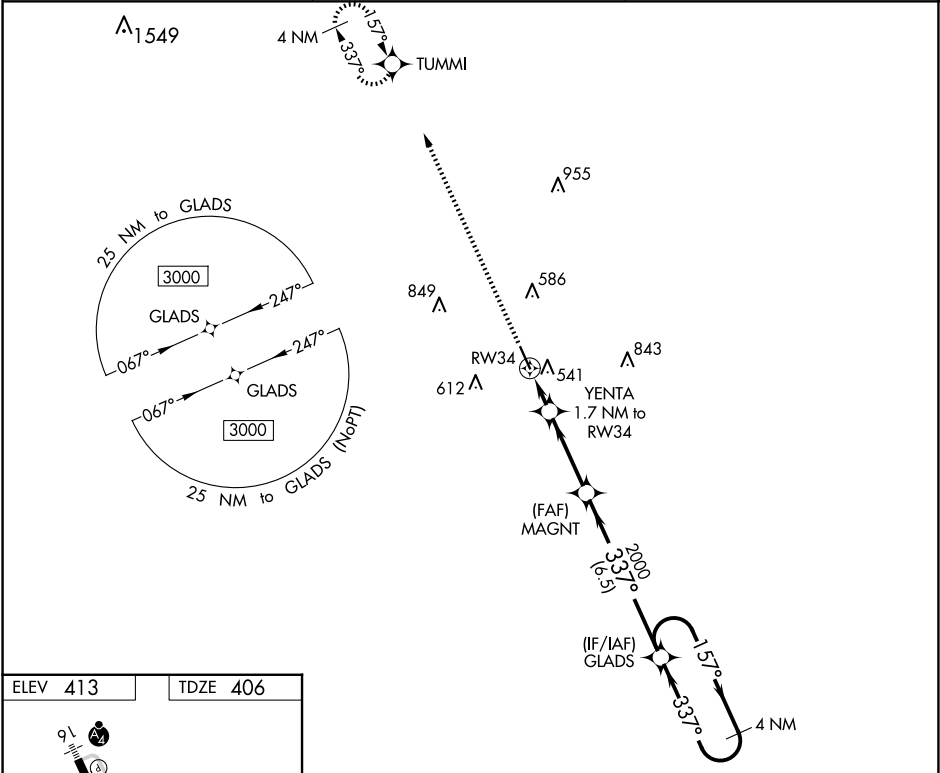
WAAS CH 77808 W34A	APP CRS 337°	Rwy Idg TDZE 406 Apt Elev 413
--	------------------------	---

RNAV (GPS) RWY 34

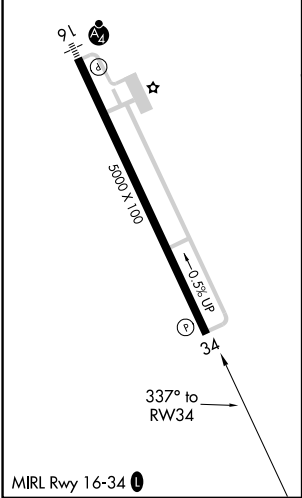
MC COMB/PIKE COUNTY/JOHN E LEWIS FLD (MCB)

RNP APCH. For uncompensated Baro-VNAV systems, LNAV/VNAV NA below -4°C (25°F) or above 54°C (130°F).	MISSED APPROACH: Climb to 3000 direct TUMMI and hold.
--	---

ASOS 119.025	HOUSTON CENTER 126.8 327.8	UNICOM 123.05 (CTAF) 0
------------------------	--------------------------------------	----------------------------------



ELEV 413	TDZE 406
-----------------	-----------------



3000	TUMMI	VGSi and RNAV glidepath not coincident (VGSi Angle 3.00/TCH 40).		4 NM Holding Pattern
*LNAV only	YENTA 1.7 NM to RW34	MAGNT	2000	3000
	1.2 NM to RW34		980	2000
	1.2 NM	0.5	3.2 NM	6.5 NM
CATEGORY	A	B	C	D
LPV DA		606-3/4	200 (200-3/4)	
LNAV/VNAV DA		739-1	333 (400-1)	
LNAV MDA	800-1	394 (400-1)	800-1 1/8	394 (400-1 1/8)
CIRCLING	880-1	467 (500-1)	940-1 1/2 527 (600-1 1/2)	1160-2 1/2 747 (800-2 1/2)

RNAV (GPS) RWY 34