

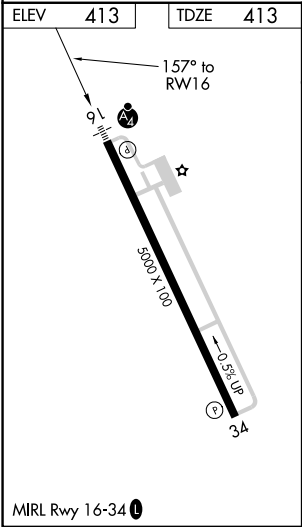
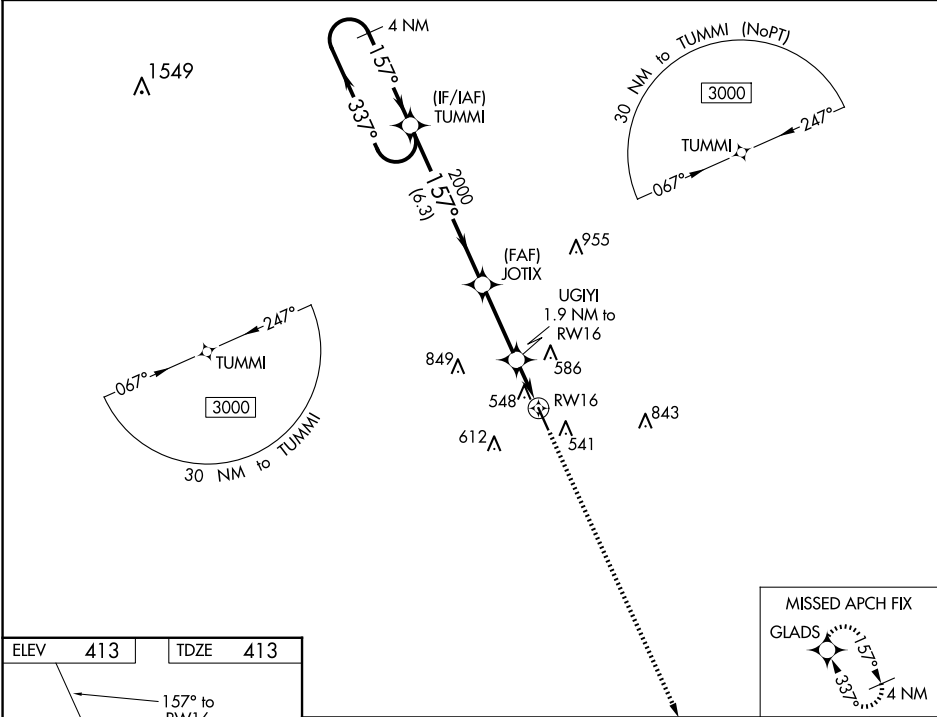
WAAS CH 72824 W16A	APP CRS 157°	Rwy Idg TDZE Apt Elev	5000 413 413
--	------------------------	-----------------------------	---

RNAV (GPS) RWY 16

MC COMB/PIKE COUNTY/JOHN E LEWIS FLD (MCB)

RNP APCH.	MALSF	MISSED APPROACH: Climb to 3000 direct GLADS and hold.
For uncompensated Baro-VNAV systems, LNAV/VNAV NA below -4°C (25°F) or above 54°C (130°F). Inop table does not apply to LPV all Cats. For inop ALS, increase LNAV/VNAV all Cats visibility to 7/8 SM.		

ASOS 119.025	HOUSTON CENTER 126.8 327.8	UNICOM 123.05 (CTAF) 0
------------------------	--------------------------------------	----------------------------------



4 NM Holding Pattern		TUMMI	JOTIX	UGIYI	RW16
3000		337°	157°	157°	
GP 3.00°					
TCH 42					
6.3 NM		3 NM	0.8	1.1	
CATEGORY	A	B	C	D	
LPV DA	615-3/4 202 (300-3/4)				
LNAV/VNAV DA	709-3/4 296 (300-3/4)				
LNAV MDA	800-3/4	387 (400-3/4)	800-7/8	387 (400-7/8)	
CIRCLING	880-1	467 (500-1)	940-1 1/2 527 (600-1 1/2)	1160-2 1/2 747 (800-2 1/2)	

RNAV (GPS) RWY 16

SC-4, 10 JUL 2025 to 07 AUG 2025

SC-4, 10 JUL 2025 to 07 AUG 2025