

WAAS CH 82232 W05A	APP CRS 049°	Rwy Idg TDZE 96 Apt Elev 101	6002
----------------------------------------	------------------------	--------------------------------------------------	-------------

RNAV (GPS) RWY 5

LOWCOUNTRY RGNL (RBW)

⚠

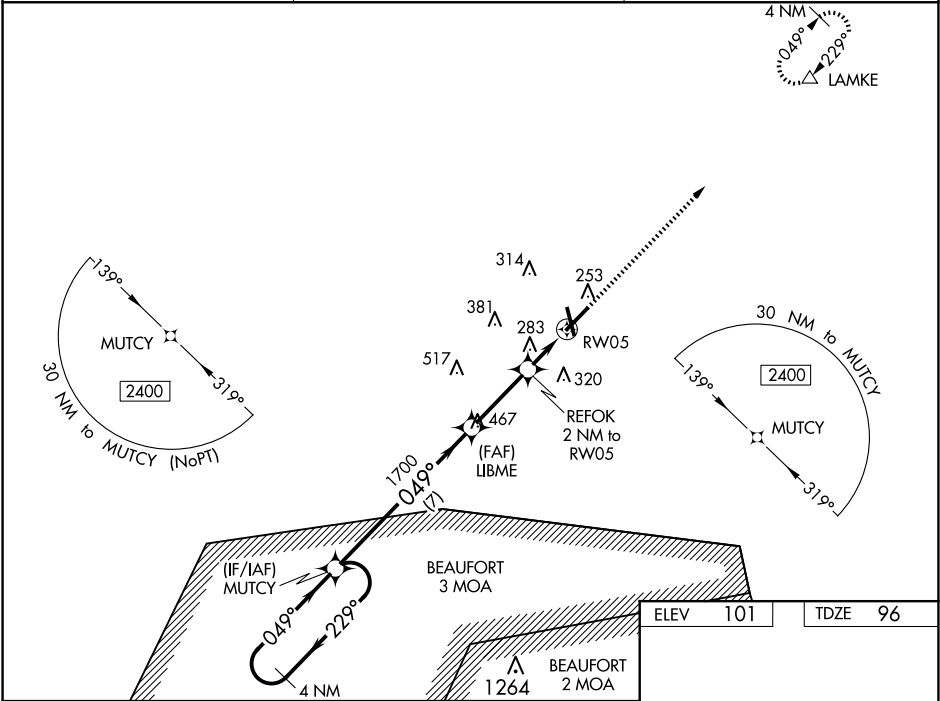
For uncompensated Baro-VNAV systems, procedure NA below -15°C (5°F) or above 54°C (130°F).
DME/DME RNP-0.3 NA. VDP and Baro-VNAV NA when using Charleston AFB/Intl altimeter setting.

⚠

Helicopter visibility reduction below ¾ SM NA. When local altimeter setting not received, use Charleston AFB/Intl altimeter setting and increase all DA 78 feet and all MDA 80 feet; increase LPV, LNAV/VNAV all Cats and Circling Cat D visibility ¼ mile, increase LNAV Cat C - D visibility ½ mile, increase Circling Cat C visibility ½ mile.

MISSED APPROACH:
Climb to 2100 direct
LAMKE and hold.

AWOS-3PT 118.725	CHARLESTON APP CON 120.7 306.925	UNICOM 122.8 (CTAF) 0
----------------------------	--------------------------------------------	---------------------------------



4 NM Holding Pattern

MUTCY VGSI and RNAV glidepath not coincident (VGSI Angle 3.50/TCH 49).

2400 ← 229°

049° →

GP 3.00° TCH 53

049°

1700

LIBME

REFOK 2 NM to RW05

*1.1 NM to RW05

RW05

*760

7 NM

2.9 NM

0.9 NM

1.1 NM

2100 LAMKE

* LNAV only.

ELEV	101	TDZE	96
REIL Rwy 23 MIRL Rwy 5-23 0			