

WAAS CH <b>48916</b> <b>W35A</b>	APP CRS <b>351°</b>	Rwy Idg TDZE <b>95</b> Apt Elev <b>101</b>	<b>5705</b>
----------------------------------------	------------------------	--------------------------------------------------	-------------

RNAV (GPS) RWY 35

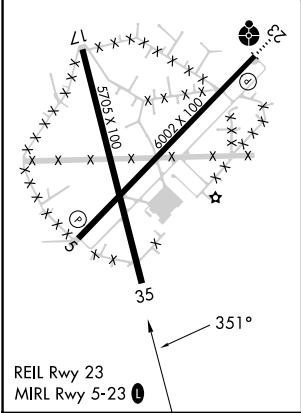
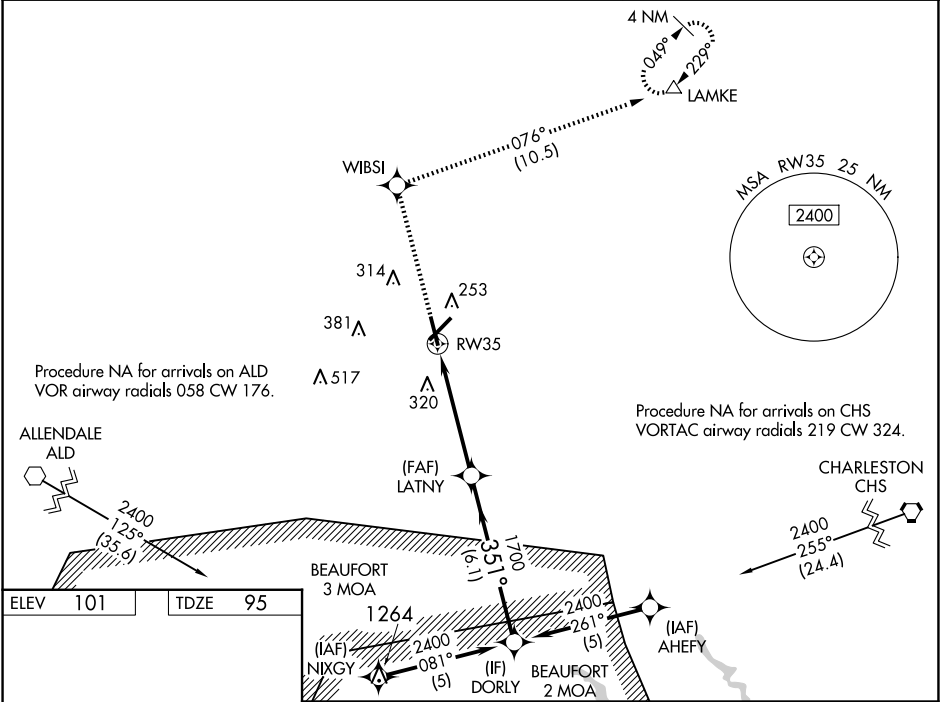
LOWCOUNTRY RGNL (RBW)

⚠ For uncompensated Baro-VNAV systems, LNAV/VNAV NA below -15°C (5°F) or above 54°C (130°F). Baro-VNAV and VDP NA when using Charleston AFB/Intl altimeter setting.

⚠ DME/DME RNP-0.3 NA. When local altimeter setting not received, use Charleston AFB/Intl altimeter setting: increase LPV DA to 476 feet and LNAV/VNAV DA to 525 feet and all MDA 80 feet; increase LPV visibility all Cats, LNAV/VNAV visibility all Cats, LNAV Cats C/D visibility, and Circling Cat D visibility ¼ mile; increase Circling Cat C visibility ½ mile.

MISSED APPROACH:  
Climb to 2100 direct WBSI and on track 076° to LAMKE and hold.

AWOS-3PT <b>118.725</b>	CHARLESTON APP CON <b>120.7 306.925</b>	UNICOM <b>122.8 (CTAF) 0</b>
----------------------------	--------------------------------------------	---------------------------------



2100	WBSI	tr 076°	LAMKE	
* LNAV only.				
1.3 NM to RW35				
1.3 NM 3.6 NM 6.1 NM				
CATEGORY	A	B	C	D
LPV DA	398-1 303 (300-1)			
LNAV/VNAV DA	447-1¼ 352 (400-1¼)			
LNAV MDA	560-1 465 (500-1)	560-1¾ 465 (500-1¾)		
CIRCLING	620-1 519 (600-1)	640-1 539 (600-1)	700-1½ 599 (600-1½)	700-2 599 (600-2)