

WAAS CH 93616 W17A	APP CRS 171°	Rwy Idg 5705 TDZE 93 Apt Elev 101
--	------------------------	--

RNAV (GPS) RWY 17

LOWCOUNTRY RGNL (R.B.W)

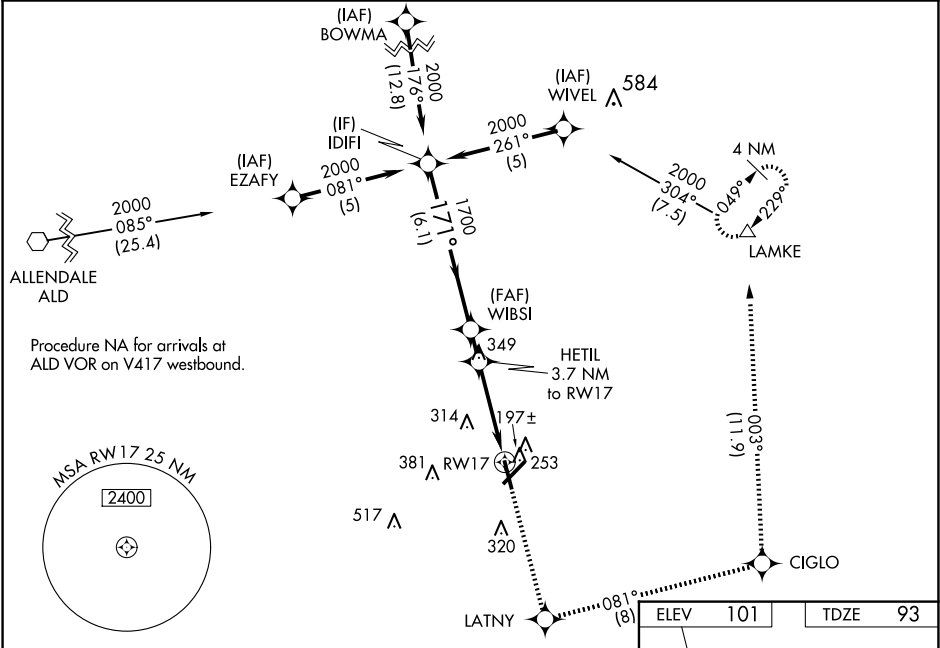
▼

▲

For uncompensated Baro-VNAV systems, LNAV/VNAV NA below -15°C (5°F) or above 54°C (130°F). Baro-VNAV and VDP NA when using Charleston Intl/AFB altimeter setting. DME/DME RNP-0.3 NA. When local altimeter setting not received, use Charleston AFB/Intl altimeter setting: increase LPV DA to 421 feet and LNAV/VNAV DA to 587 feet and all MDA 80 feet; increase LPV visibility all Cats ¼ mile; increase LNAV/VNAV visibility all Cats, LNAV Cats C/D, and Circling Cat D visibility ¼ mile; increase Circling Cat C visibility ½ mile.

MISSED APPROACH:
Climb to 2100 direct LATNY and on track 081° to CIGLO and track 003° to LAMKE and hold.

AWOS-3PT 118.725	CHARLESTON APP CON 120.7 306.925	UNICOM 122.8 (CTAF) 0
----------------------------	--	---------------------------------



IDIFI		WBSI		LATNY		CIGLO		LAMKE	
2000		1700		3.7 NM to RW17		1.4 NM to RW17		*LNAV only.	
GP 3.00° TCH 40		*1300							
6.1 NM		1.2 NM		2.3 NM		1.4 NM			
CATEGORY	A	B	C	D					
LPV DA	343-1				250 (300-1)				
LNAV/VNAV DA	508-1½				415 (500-1½)				
LNAV MDA	580-1		487 (500-1)		580-1¾		487 (500-1¾)		
CIRCLING	620-1 519 (600-1)	640-1 539 (600-1)	700-1½ 599 (600-1½)	700-2 599 (600-2)					

REIL Rwy 23
MIRL Rwy 5-23

171°
500 X 100
500 X 100
35