

LOC/DME I-RBW	APP CRS	Rwy ldg	6002
110.15	229°	TDZE	101
Chan 38 (Y)		Apt Elev	101

ILS Y or LOC Y RWY 23

LOWCOUNTRY RGNL (R.BW)

DME required.

▼

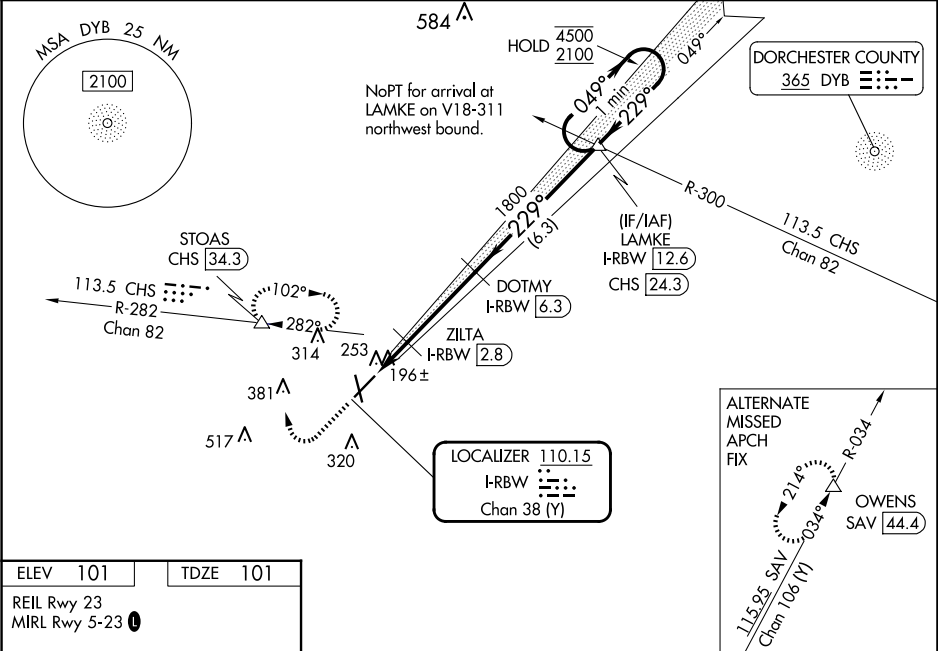
▲

Rwy 23 helicopter visibility reduction below ¾ SM NA.
Inop table does not apply to S-LOC 23 all Cats.

ODALS

MISSED APPROACH: Climb to 700 then climbing right turn to 2000 on heading 360° and CHS VORTAC R-282 to STOAS/CHS VORTAC 34.3 DME and hold, continue climb-in-hold to 2000, or as directed by ATC.

AWOS-3PT 118.725	CHARLESTON APP CON 120.7 306.925	UNICOM 122.8 (CTAF)
----------------------------	--	-------------------------------



ELEV 101 TDZE 101

REIL Rwy 23
MIRL Rwy 5-23

FAF to MAP 5.2 NM

Knots	60	90	120	150	180
Min:Sec	5:12	3:28	2:36	2:05	1:44

700 2000		CHS R-282	STOAS	VGSI and ILS glidepath not coincident (VGSI Angle 3.00/TCH 46).		One Minute Holding Pattern	
hdg 360°							
		ZILTA I-RBW [2.8]	DOTMY I-RBW [6.3]	LAMKE I-RBW [12.6]			
		I-RBW [1.1]	I-RBW [2.1]	1800		049° 4500 2100 229°	
		680		1800		GS 3.00° TCH 43	
1 NM 0.7		3.5 NM		6.3 NM			
CATEGORY	A		B		C		D
S-ILS 23			301-¾		200 (200-¾)		
S-LOC 23	460-¾		359 (400-¾)		460-⅞		359 (400-⅞)
CIRCLING	620-1		519 (600-1)		700-1½ 599 (600-1½)		700-2 599 (600-2)