

WAAS
CH **78220**
W12A

APP CRS
117°

Rwy Idg
TDZE **940**
Apt Elev **940**

RNAV (GPS) RWY 12

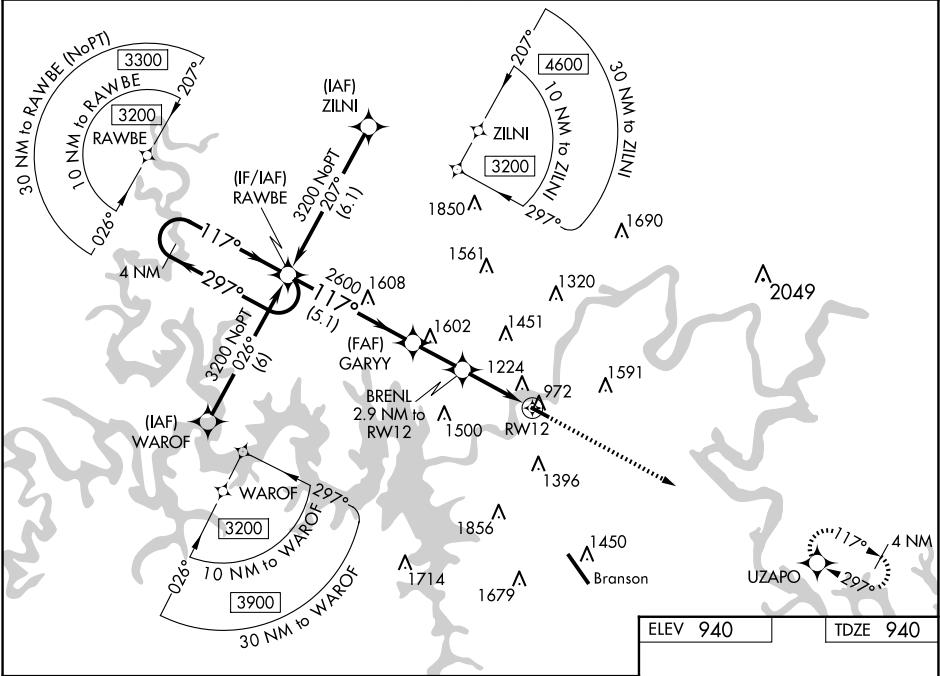
M GRAHAM CLARK DOWNTOWN (PLK)

Baro-VNAV NA when using Branson altimeter setting. For uncompensated Baro-VNAV systems, LNAV/VNAV NA below -16°C (4°F) or above 54°C (130°F). DME/DME RNP-0.3 NA. VDP NA with Branson altimeter setting. Obtain local altimeter setting on CTAF; when not received, use Branson altimeter setting and increase all DA 65 feet and all MDA 80 feet; increase LPV all Cats visibility ½ mile and LNAV/VNAV all Cats visibility ¼ mile.

MISSED APPROACH:
Climb to 3200 direct UZAPO and hold.

SPRINGFIELD APP CON
126.35

UNICOM
122.7 (CTAF)



4 NM Holding Pattern RAWBE

*LNAV only

3200 UZAPO

GP 3.10° TCH 40

2600

*1920

5.1 NM

2 NM

1.2

1.7 NM

117° to RW12

3738 X 100

CATEGORY	A	B	C	D
LPV DA	1140-¾	200 (200-¾)		NA
LNAV/VNAV DA	1416-1⅝	476 (500-1⅝)		NA
LNAV MDA	1540-1	600 (600-1)		NA
CIRCLING	1560-1	620 (700-1)		NA

REIL Rwy 12 and 30
MIRL Rwy 12-30