

WAAS CH 93509 W30A	APP CRS 305°	Rwy Idg 4699 TDZE 3387 Apt Elev 3394
--	------------------------	---

RNAV (GPS) RWY 30

GARDEN COUNTY/KING RHILEY FLD (OKS)

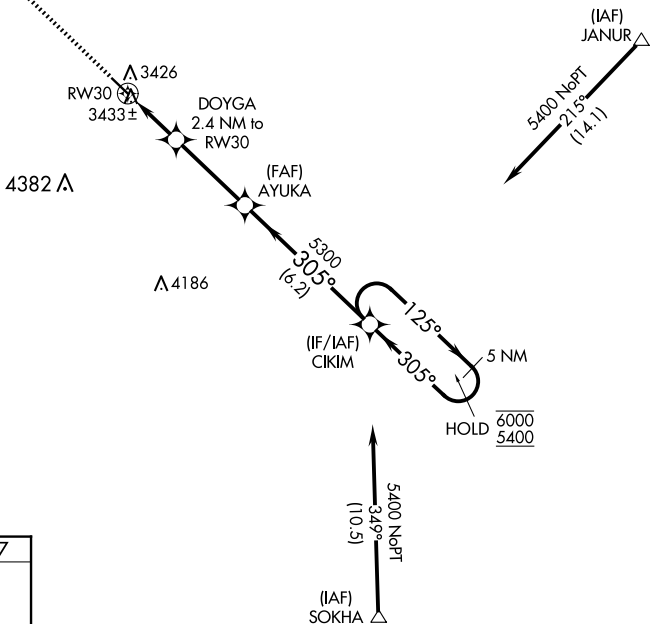
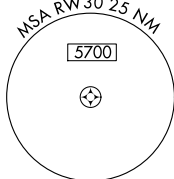
RNP APCH.

T Rwy 30 helicopter visibility reduction below $\frac{3}{4}$ SM NA.
A NA Baro-VNAV NA. Use Ogallala altimeter setting.

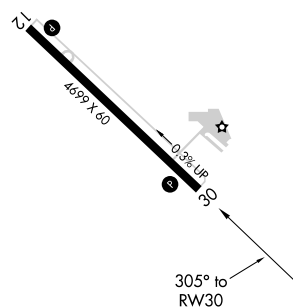
MISSED APPROACH: Climb to 5700 direct HITLO and hold.

OGA AWOS-3 121,275	DENVER CENTER 118,475 225.4	UNICOM 122.8 (CTAF) 0
------------------------------	---------------------------------------	---------------------------------

MISSED APCH FIX



ELEV 3394		TDZE 3387
-----------	--	-----------



REIL Rwy 12 and 30 L

MIRL Rwy 12-30 **L**

The diagram illustrates the DOYGA 5 NM Holding Pattern. Key features include:

- Holding Pattern:** A series of turns around a fix at 5300 feet.
- Turn Angles:** 125°, 305°, and 305°.
- Distances:** 2.4 NM, 3.4 NM, and 6.2 NM between turns.
- Altitudes:** 5700, 5300, and 5400.
- Other Labels:** HITLO, RW30, AYUKA, CIKIM, GP 3.00° TCH 40, and 5400.