

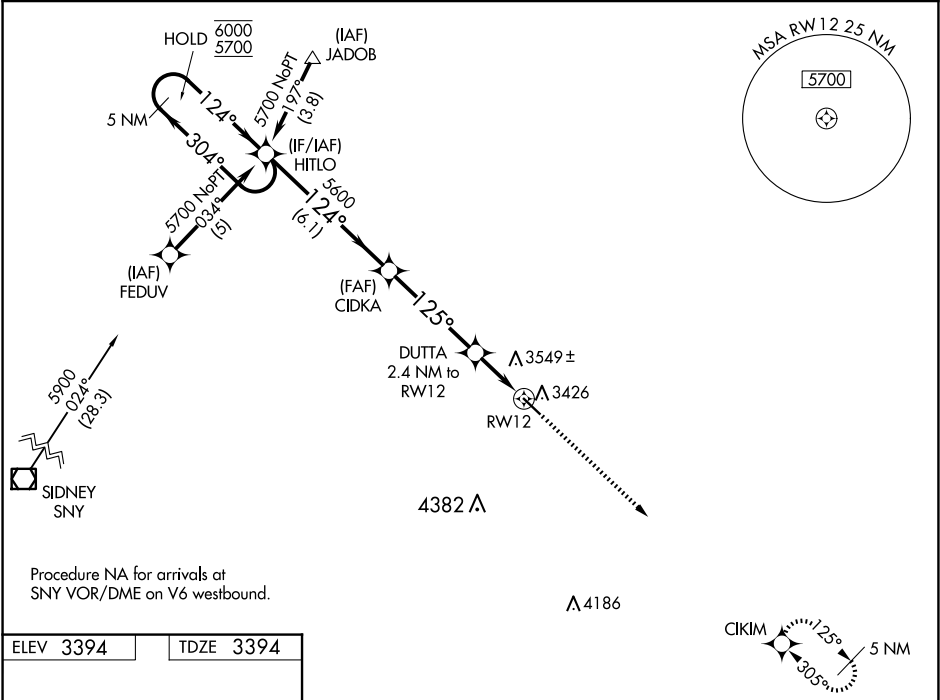
WAAS CH <b>99708</b> <b>W12A</b>	APP CRS <b>125°</b>	Rwy Idg <b>4699</b> TDZE <b>3394</b> Apt Elev <b>3394</b>
--	------------------------	---

RNAV (GPS) RWY 12

GARDEN COUNTY/KING RHILEY FLD (OKS)

RNP APCH.	MISSED APPROACH: Climb to 5400 direct CIKIM and hold.
<div><div>Baro-VNAV NA. Rwy 12 helicopter visibility reduction below ¾ SM NA. Use Ogallala altimeter setting.</div><div>NA</div></div>	

OGA AWOS-3 <b>121.275</b>	DENVER CENTER <b>118.475 225.4</b>	UNICOM <b>122.8 (CTAF) 0</b>
------------------------------	---------------------------------------	---------------------------------



ELEV 3394	TDZE 3394
-----------	-----------

