

NDB OKS <b>233</b>	APP CRS <b>112°</b>	Rwy Idg TDZE Apt Elev	<b>4699</b> <b>3394</b> <b>3394</b>
-----------------------	------------------------	-----------------------------	---

NDB RWY 12

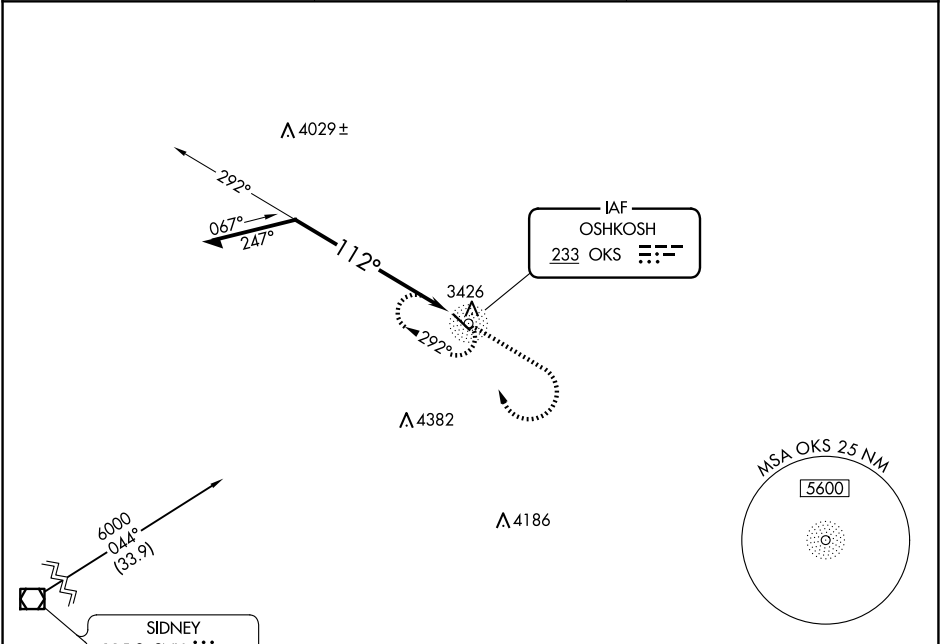
GARDEN COUNTY/KING RHILEY FLD (OKS)

NA

Use Ogallala altimeter setting.

MISSED APPROACH: Climb to 5600 then right turn direct OKS NDB and hold.

OGA AWOS-3 <b>121.275</b>	DENVER CENTER <b>118.475 225.4</b>	UNICOM <b>122.8</b> (CTAF) <b>1</b>
------------------------------	---------------------------------------	--



$\Delta 4390$

Remain within 10 NM

OKS NDB

5600

292°

112°

5600

↑

↷

OKS

CATEGORY	A	B	C	D
S-12	4600-1¼ 1206 (1300-1¼)	4600-1½ 1206 (1300-1½)	NA	
CIRCLING	4600-1¼ 1206 (1300-1¼)	4600-1½ 1206 (1300-1½)	NA	

ELEV 3394

TDZE 3394

112° to NDB

4699 X 60

0.3% UP

REIL Rwy 12 and 30 **1**  
MIRL Rwy 12-30 **1**

NC-2, 10 JUL 2025 to 07 AUG 2025

NC-2, 10 JUL 2025 to 07 AUG 2025