

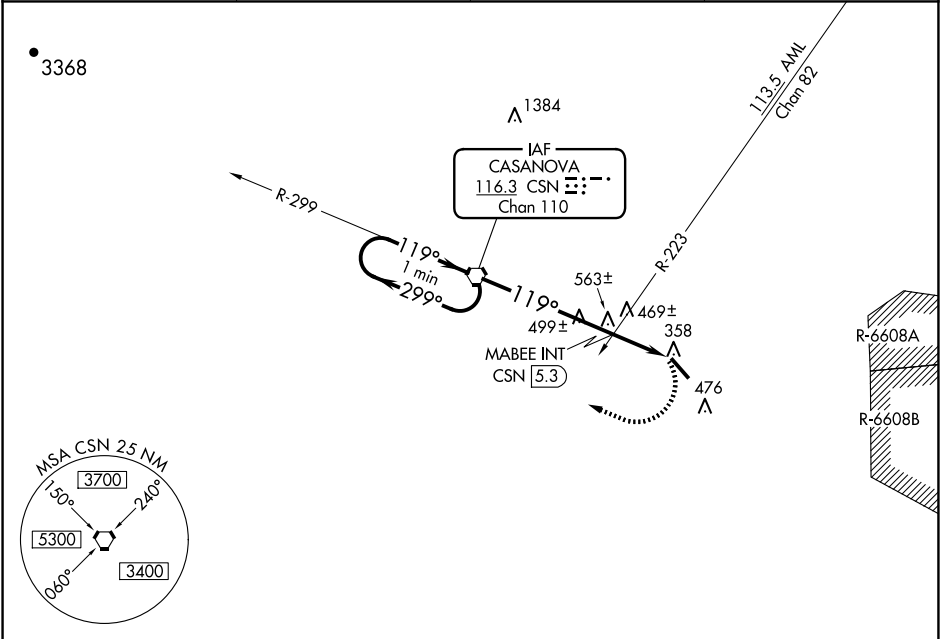
VORTAC CSN	APP CRS	Rwy Idg	5000
116.3	119°	TDZE	327
Chan 110		Apt Elev	336

VOR RWY 15  
WARRENTON/FAUQUIER (HWY)

**⚠** When local altimeter setting not received, use Culpeper altimeter setting and increase all MDA 40 feet; increase S-15 Cats C/D and Circling Cats C/D visibility ½ SM; increase MABEE fix minimums S-15 Cats C/D and Circling Cat D visibility ¼ SM. Helicopter visibility reduction below ¾ SM NA.

MISSED APPROACH: Climbing right turn to 2800 direct to CSN VORTAC and hold.

AWOS-3 120.350	CJR AWOS-3 119.325	POTOMAC APP CON 128.525 306.925	UNICOM 122.7 (CTAF) <b>0</b>
-------------------	-----------------------	------------------------------------	---------------------------------



One Minute Holding Pattern

2800 ← 299° 119° → 2800

\*1100 when using Culpeper altimeter setting.

CSN VORTAC

MABEE INT CSN 5.3

3.01° TCH 52

\*1060

5.3 NM 2.3 NM

2800 CSN

ELEV 336 TDZE 327

119°

370±

0.5% UP → 5000 X 100

33

CATEGORY	A	B	C	D
S-15	1060-1 733 (800-1)	1060-1¼ 733 (800-1¼)	1060-2 733 (800-2)	1060-2¼ 733 (800-2¼)
CIRCLING	1060-1	724 (800-1)	1060-2 724 (800-2)	1060-2¼ 724 (800-2¼)
MABEE FIX MINIMUMS (DUAL VOR RECEIVERS OR DME REQUIRED)				
S-15	820-1	493 (500-1)	820-1¾	493 (500-1¾)
CIRCLING	820-1	484 (500-1)	880-1½ 544 (600-1½)	980-2 644 (700-2)

REIL Rwy 15 and 33  
HIRL Rwy 15-33 **0**

FAF to MAP 7.6 NM

Knots	60	90	120	150	180
Min:Sec	7:36	5:04	3:48	3:02	2:32

NE-3, 10 JUL 2025 to 07 AUG 2025

NE-3, 10 JUL 2025 to 07 AUG 2025