

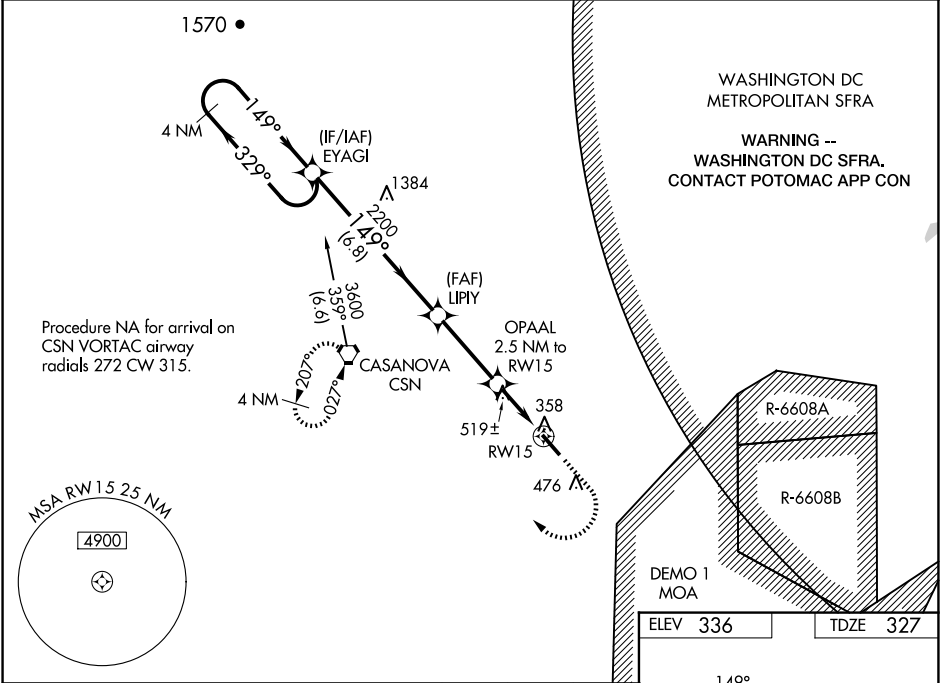
WAAS CH <b>81926</b> <b>W15A</b>	APP CRS <b>149°</b>	Rwy ldg TDZE Apt Elev	<b>5000</b> <b>327</b> <b>336</b>
--	------------------------	-----------------------------	---

RNAV (GPS) RWY 15  
WARRENTON/FAUQUIER (HWY)

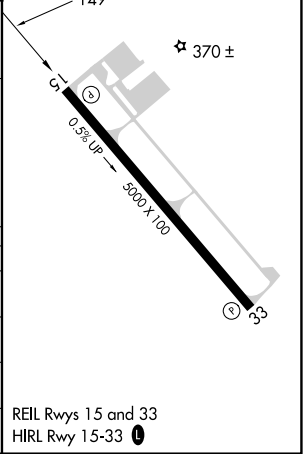
**⚠** Baro-VNAV NA when using Culpeper altimeter setting. For uncompensated Baro-VNAV systems, LNAV/VNAV NA below -11°C (13°F) or above 41°C (105°F). DME/DME RNP-0.3 NA. Helicopter visibility reduction below ¾ SM NA. When local altimeter setting not received, use Culpeper altimeter setting: increase LPV DA to 549 feet; increase LNAV/VNAV DA to 607 feet and all visibilities ½ SM; increase all MDAs 40 feet and Circling Cat D visibility ¼ SM.

**MISSED APPROACH:**  
Climb to 1800 then climbing right turn to 3000 direct CSN VORTAC and hold.

AWOS-3 <b>120.35</b>	CJR AWOS-3 <b>119.325</b>	POTOMAC APP CON <b>128.525 306.925</b>	UNICOM <b>122.7 (CTAF) 0</b>
-------------------------	------------------------------	---	---------------------------------



4 NM Holding Pattern		EYAGI		LIPIY		OPAAL		RW15	
3600		329°		149°		2200		2.5 NM to RW15	
GP 3.00°		TCH 53		2200		*1160		*1.3 NM to RW15	
CATEGORY		A		B		C		D	
LPV DA				527-¾		200 (200-¾)			
LNAV/VNAV DA				585-¾		258 (300-¾)			
LNAV MDA		780-1		453 (500-1)		780-1¾		453 (500-1¾)	
CIRCLING		780-1		800-1		880-1½		980-2	
		444 (500-1)		464 (500-1)		544 (600-1½)		644 (700-2)	



WARRENTON/FAUQUIER (HWY)  
RNAV (GPS) RWY 15

NE-3, 10 JUL 2025 to 07 AUG 2025

NE-3, 10 JUL 2025 to 07 AUG 2025